



# PRODUCT CATALOGUE



WELD CLEANING

SURFACE TREATMENT

METAL MARKING

PIPE TOOLS

FUME EXTRACTION



"Hello there,

Here at Cougartron, we are passionate about what we do and we strive to be the best supplier of weld cleaning equipment for our customers' needs.

Recognized as leaders in the electrolytic weld cleaning machines and fluids sector, we are industry experts who are continuously improving and responding to the demands of our customers.

We are a trusted provider of weld cleaning solutions. Safety plays a big role in our industry, and that's why we want to offer you leading equipment that is safe and environmentally friendly.

We have divided this catalogue into five categories so it's easy to find what you are looking for. The categories are: weld cleaning, surface treatment, marking equipment, pipe tools, and fume extraction.

Our products are unique and designed to enhance our customers' workflow and deliver fast results."

Jonathan Edwards, CEO





# TABLE OF CONTENTS

## WELD CLEANING MACHINES

Introduction	7
Weld Cleaning Machines	16
Machine Accessories	28
Brushes & Accessories	38
Fluids & Accessories	46

## SURFACE TREATMENT

Pickle 'N' Clean	56
Wipe 'N' Weld	58
Clean 'N' Protect	60

## MARKING EQUIPMENT

MK12	64
MK612	66
Etching Stencils & Printers	68
Marking Sets & Fluids	74

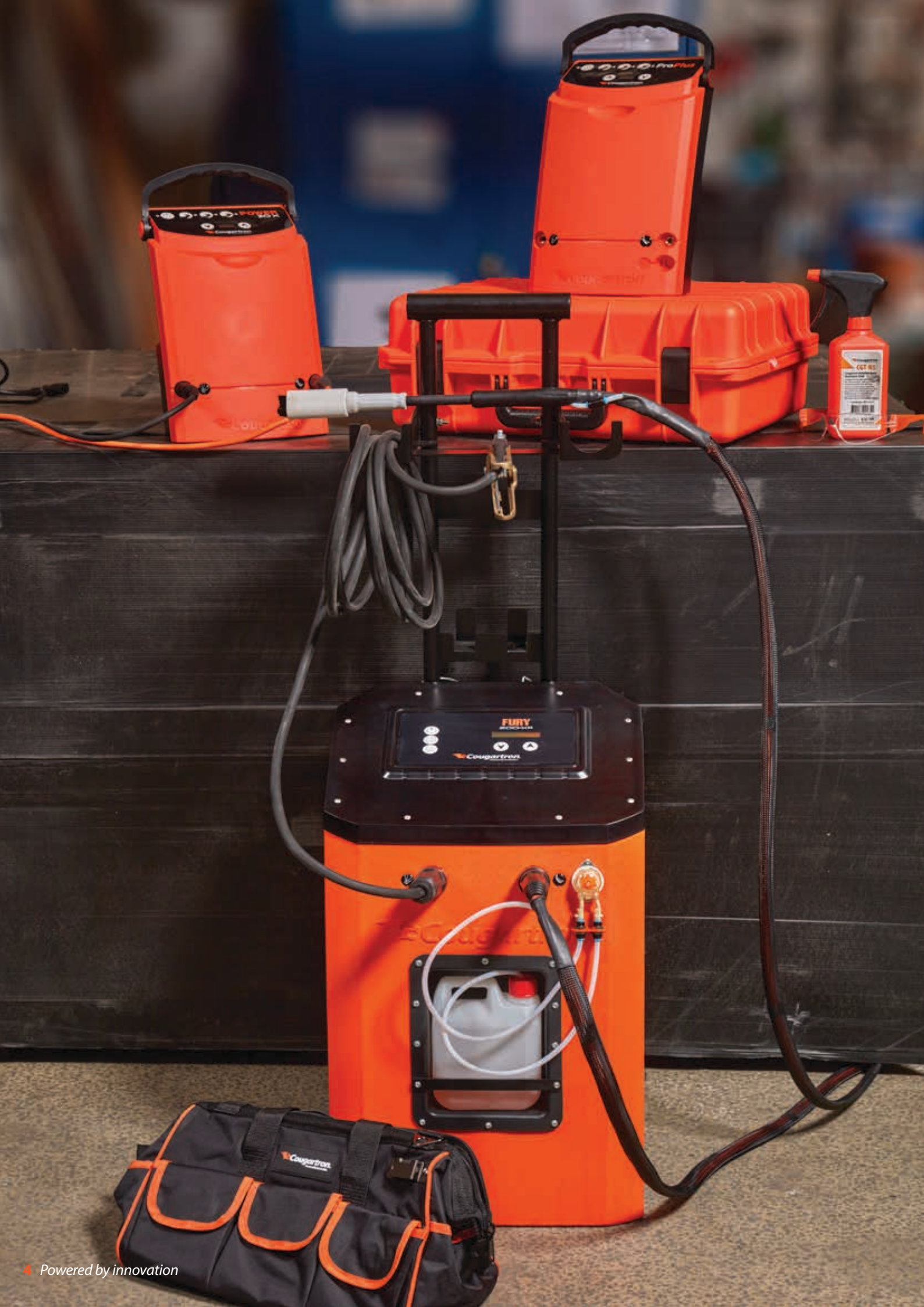
## PIPE TOOLS

Silicone Purge Plugs	78
Dual Seal Purge System	80
Pipe Clamps	86
Pipe Stands & Accessories	88

## FUME EXTRACTION

Mobile & Portable Units	92
Extraction Arms	96
Extraction Tables, Walls & Hoods	104

We've divided the catalogue into five sections to help you find what you need easily. On the right-hand side, you'll see these sections clearly marked, making it simple for you to navigate and locate the products you're looking for.







# WELD CLEANING

## INTRODUCTION

Why choose Cougartron	9
Why clean Stainless Steel weld Seams?	10
Product Comparison	12
Machine Selection Tool	14

## WELD CLEANING MACHINES

PowerONE	16
Power30	18
Power30X	20
ProPlus	22
FURY100	24
FURY200	26
FURY100XF	28
FURY200XF	30

## MACHINE ACCESSORIES

FL10 & FL20 Explained	32
FL10 - Fluid Feed System	34
FL20 - Fluid Feed System	36
Mobile Equipment Stand	38
Mobile Workstation	39
Power Cables	41
General Accessories	42

## WELD CLEANING BRUSHES

Long-life brushes	44
Brush Accessories	46

## WELD CLEANING FLUIDS

CGT - 550	50
CGT - 350	50
CGT - 650	50
CGT - N5	52

Were you aware that all our machines are crafted in Denmark within our own production facility? Right here, we meticulously test, develop, and innovate. Continuously expanding our weld cleaning collection. Our machines stand out not only for their robust design but also for their unparalleled power. We take pride in delivering top-quality products that effectively streamline your work processes.

Every metalworker deserves fast,  
safe & effective  
weld cleaning & passivation  
equipment.

That's why  
**Cougartron** exists.

## Why choose Cougartron:



### High-speed cleaning:

We don't make slow weld-cleaners. Ranging from 30-200A (420-3200VA), our weld-cleaners are best-in-class for their respective applications.



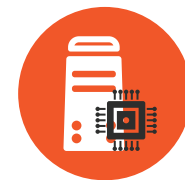
### Food-safe fluids:

The Cougartron cleaning process uses food-grade electrolytes, certified for use in the food and pharmaceutical industry.



### Long brush life:

Our brushes are optimized for our equipment and provide 5-8 hours of effective weld cleaning (the lifetime varies depending on your application).



### Advanced electronics:

The innovative CougarSense electronics system ensures the perfect amount of fluid and power is delivered during the weld cleaning process, preventing brush burning.



### Intuitive user interface:

The machines are equipped with an intuitive control panel that provides feedback through a digital display, adding an extra layer of practicality to your process.



### Extra long, heavy duty cables:

Standard 4 or 6 meters cables, with available extensions (up to 4x-in length – sold as extra items).



### Extended warranty:

An extended 2-year warranty is available for all users by registering your machine on our website.



### Fast technical support & repairs:

We understand that every stainless steel welding workshop needs timely support, to keep their equipment running perfectly. See page 105 for more details.



**Here are the main reasons why:**

1. Oxides, which also appear as heat tints and discoloration, form during the welding process due to high temperatures.
2. This reduces the corrosion resistance of stainless steel and makes it more susceptible to rust.
3. Since stainless steel is usually not coated or painted, the finished product looks much better after oxides are removed through weld cleaning. This process results in shiny and clean welds.

**Above points explained in more detail below:**

**Impact on Stainless Steel Properties**

Stainless steel is known for its corrosion resistance due to the presence of a thin, invisible layer known as the passive layer on its surface. However, welding breaks down the passive layer leading to the formation of a thicker layer of oxides. The oxides render the steel surface susceptible to corrosion, thereby diminishing both its strength and structural integrity.

**Compromised Structural Integrity**

The presence of oxides on the weld seam can compromise the structural integrity of the joint. The oxides may act as stress concentrators, leading to the initiation and propagation of cracks. This can result in premature failure of the welded component, posing a safety risk, especially in critical applications.

**Importance of Achieving Visual Appeal**

Additionally, removing oxides is important for achieving a visually appealing weld seam. Stainless steel is often used in applications where aesthetics play a vital role, such as architectural structures or high-end consumer products. It is also used in highly hygienic environments such as food & beverage factories and pharmaceutical production plants. Oxides on the weld seam can tarnish the appearance of the finished product, making it look unsightly and unprofessional. By removing the oxides, a clean, smooth, and uniform weld seam can be achieved, enhancing the overall visual appeal of the stainless steel component.

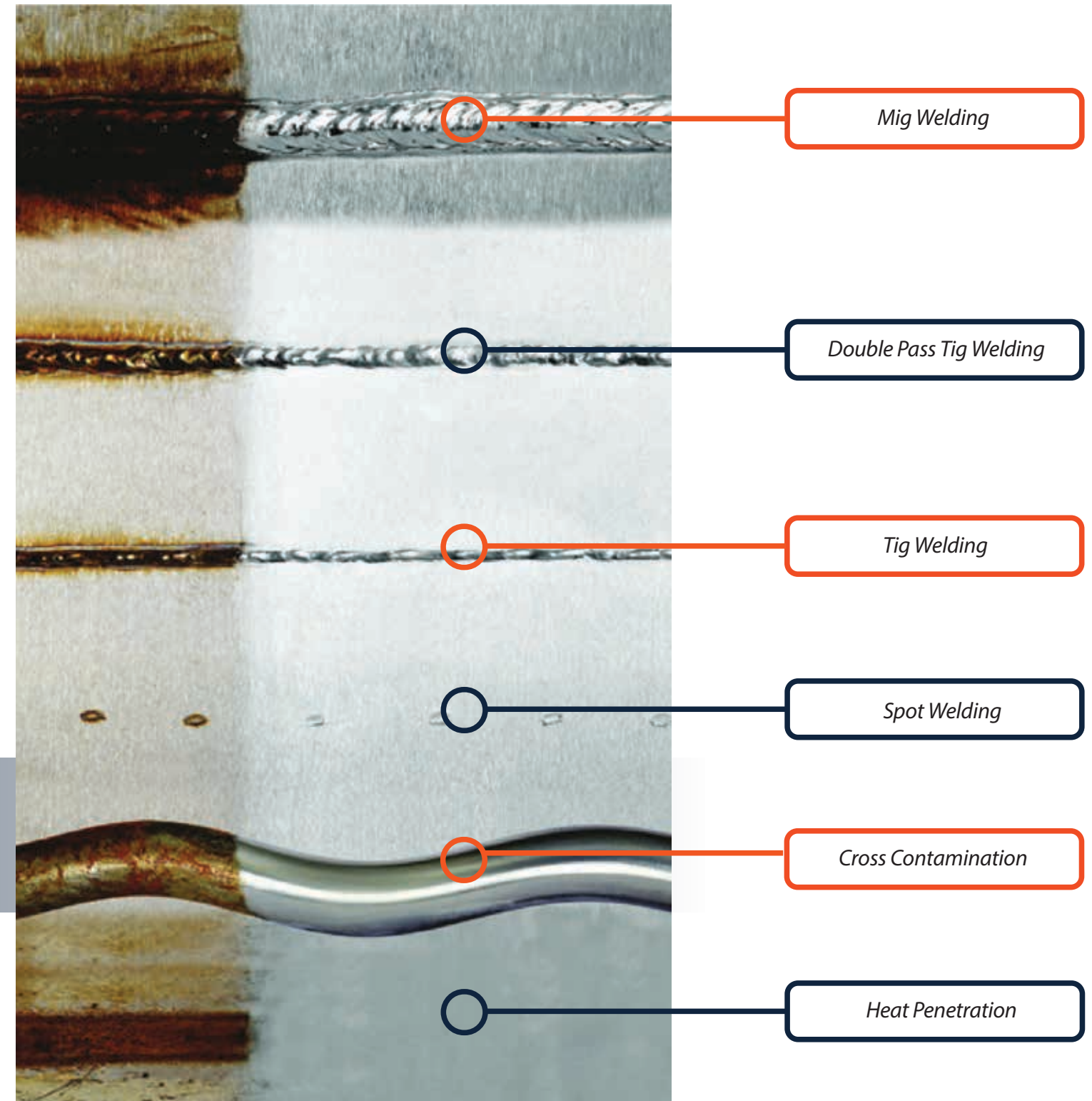
Interested to learn more?

Visit our blog at [www.cougartron.com](http://www.cougartron.com) or use the QR code.



Cougartron equipment can clean and passivate almost any kind of stainless steel weld seam, successfully removing various types of heat tints.

Below are examples of some common applications. Generally, TIG weld seams are easier and faster to clean while MIG welds are typically more heavily oxidised and require a higher-powered machine (E.g. Fury 200) to clean effectively. **See page 14 to choose the correct machine for your application.**



Mig Welding

Double Pass TIG Welding

Tig Welding

Spot Welding

Cross Contamination

Heat Penetration

PRODUCT COMPARISON



Technical data	PowerONE	Power30	Power30X	ProPlus
Power supply 110/230V version	110-230 V AC, 50/60Hz, 8A	110-230 V AC, 50/60Hz, 4A	110-230 V AC, 50/60Hz, 4A	N/A
Power supply 110V version	N/A	N/A	N/A	110 V AC, 50/60Hz, 8A
Power supply 230V version	N/A	N/A	N/A	240 V AC, 50/60Hz, 8A
Weld-cleaning Amp range	0-80A	5-30A, 5A increments	5-30A, 5A increments	5-50A, 5A increments
Weld-cleaning Voltage range	10V AC	10-14 V AC	10-14 V AC	14 V AC
Polishing Amp range	N/A	N/A	5-30A, 5A increments	5-50A, 5A increments
Polishing Voltage range	N/A	N/A	10 V DC	14 V DC
Marking Amp range	10A	2-10A, 2A increments	2-10A, 2A increments	2-10A, 2A increments
Marking Voltage range	10V AC	10 V AC	10 V AC	14 V AC
Duty cycle	100%	100%	100%	100%
Detachable handle	No	No	No	No
Input cable length	1.5m	1.5m	1.5m	1.5m
Output cable length	4m	4m	4m	4m
Output cable Size	16mm <sup>2</sup>	10mm <sup>2</sup>	10mm <sup>2</sup>	10mm <sup>2</sup>
Brush holder options	1	1	1	1,2
Fluid feed compatible	Yes	Yes	Yes	Yes
Enclosure protection	IP51	IP51	IP51	IP51

Entry-Level

An easy to use machine - connect to power, turn on, and clean! Cougartron Quality at an affordable price. Lightweight and portable making them great for onsite work.

Precision-Range

The 'most precise in class' for the lower amperage weld cleaners. Has the ability and power to clean MIG welds, but also possesses the necessary precision to clean the smallest of components and the thinnest of materials without overheating the parts, due to the precise control of output amperage in 5amp increments. All this packed into a lightweight and portable build, making them great for inhouse or onsite work.



Technical data	Fury100	Fury200	Fury100XF	Fury200XF
Power supply 110/230V version	N/A	N/A	N/A	N/A
Power supply 110V version	110 V AC, 50/60Hz, 15A	110 V AC, 50/60Hz, 32A	110 V AC, 50/60Hz, 15A	110 V AC, 50/60Hz, 32A
Power supply 230V version	240 V AC, 50/60Hz, 10A	240 V AC, 50/60Hz, 16A	240 V AC, 50/60Hz, 10A	240 V AC, 50/60Hz, 16A
Weld-cleaning Amp range	20-200A, 20A increments	20-200A, 20A increments	20-200A, 20A increments	20-200A, 20A increments
Weld-cleaning Voltage range	10-16 V AC	10-16 V AC	10-16 V AC	10-16 V AC
Polishing Amp range	20-200A, 20A increments	20-200A, 20A increments	20-200A, 20A increments	20-200A, 20A increments
Polishing Voltage range	10-12 V DC	10-12 V DC	10-12 V DC	10-12 V DC
Marking Amp range	2-10A, 2A increments	2-10A, 2A increments	2-10A, 2A increments	2-10A, 2A increments
Marking Voltage range	12 V AC	12 V AC	12 V AC	12 V AC
Duty cycle	100%	100%	100%	100%
Detachable handle	Yes	Yes	Yes	Yes
Input cable length	4m	4m	4m	4m
Output cable length	6m	6m	6m	6m
Output cable Size	35mm <sup>2</sup>	35mm <sup>2</sup>	35mm <sup>2</sup>	35mm <sup>2</sup>
Brush holder options	1,2	1,2,3	1,2	1,2,3
Fluid feed compatible	No	No	Fully integrated	Fully integrated
Enclosure protection	IP51	IP51	IP51	IP51

Heavy Duty Range

The real beast in any workshop. FURY machines will clean any weld with ease – no oxidation stands a chance. Despite its immense power output available for the toughest of tasks, the FURY line can also deliver precise output current in 20 amp increments, allowing its users to clean all weld types and sizes, from the thinnest sheet metal to the longest heavily-contaminated welds and surfaces. Regular stainless steel, Duplex, Super Duplex – You name it, FURY will clean it. No exceptions.



## THE WELD CLEANER PRODUCT RANGE

### Machine Selection Tool

Use the table below to help you identify the correct weld-cleaner for your needs:

<b>A</b>	<b>B</b>	<b>C</b>			
<b>Welding process</b>	<b>Material thickness</b>	<b>Hours/ week</b>	<b>Amps</b>	<b>Machines(s)</b>	<b>Cleaning speed m/ min approx.</b>
GTAW (TIG)	1-3mm	<5	30	PowerONE, Power30, Power30X	0.5
		5-20	50	ProPlus	1.0
		20+	100	Fury100, Fury100XF*	2.0
GTAW (TIG)	3-6mm	<5	30	Power30, Power30X	0.4
		5-20	50-100	ProPlus, Fury100	1.0
		20+	200	Fury200, Fury100XF*	2.0
GTAW (TIG)	6mm+	<5	50	ProPlus	0.5
		5-20	50-100	Fury100, Fury200	1.0
		20+	200	Fury100XF, Fury200XF*	2.0
GMAW (MIG)	1-5mm	<5	50	PowerONE, ProPlus	0.5
		5-20	50-100	Fury100, Fury200	1.0
		20+	200	Fury100XF, Fury200XF*	1.5
GMAW (MIG)	5mm+	<5	50	ProPlus, Fury100	0.4
		5-20	50-100	Fury100, Fury200	0.7
		20+	200	Fury100XF, Fury200XF*	1.0

**Important note:** In the above table, double-pass TIG welding should be regarded as MIG welding.  
\*Machines with fluid feed, can clean approx. 30% faster.

- A** **Criteria A**  
Which welding process is used in over 50% of your weld-cleaning applications?
- B** **Criteria B**  
Which material thickness is used in over 50% of your weld-cleaning applications?
- C** **Criteria C**  
How many hours/week of weld-cleaning do you plan to do on average?



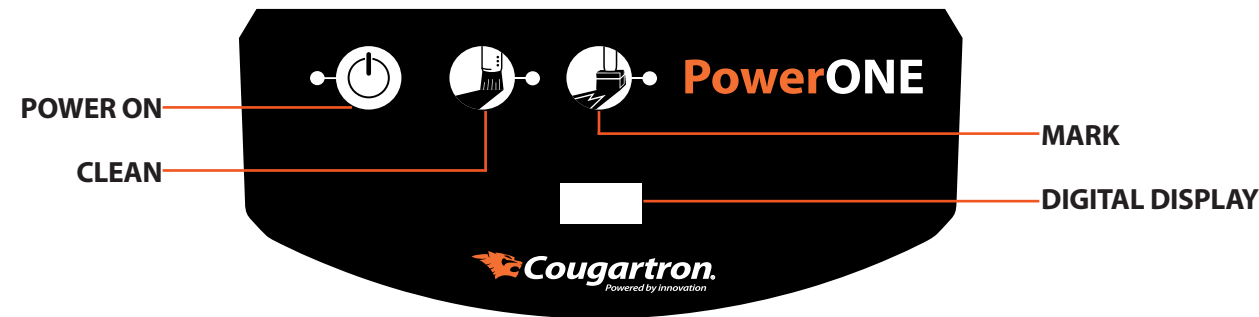
WELD CLEANING



The Cougartron PowerONE is our brand new entry level weld cleaning machine. Although at the entry level price point, no short cuts have been taken. This machine has all the safety and design features you have become to accept as standard with Cougartron machines – fully digital safety control and robust and durable machine design. The perfect starter Set!

**Key features:**

- Entry level price point.
- Simple to use.
- 4m Work lead and earth lead as standard.
- Excellent Power to weight ratio.
- Splash-proof membrane control panel is easily wiped clean.
- Compact & easily transportable.
- Dual input voltage – use the same machine on a 110V or 230V power supply.



**Technical Data**

Power supply: 110/230V version	110-230 V AC, 50/60Hz, 8A
Power supply: 110V version	N/A
Power supply: 230V version	N/A
Weld-cleaning: Amp range	0-80A
Weld-cleaning: Voltage range	10 V AC
Polishing: Amp range	N/A
Polishing: Voltage range	N/A
Marking: Amp range	10A
Marking: Voltage range	10V AC
Duty cycle	100%
Detachable handle	No
Input cable length	1.5m
Output cable length	4m
Output cable Size	16mm <sup>2</sup>
Brush holder options	1
Fluid feed compatible	Yes
Size (machine only)	H (with handle up) 378mm, W 220mm, D 170mm
Enclosure protection	IP51
Certification	CE, RCM



**Set buying information**

Description	Weight	110 - 230V
PowerONE Weld-cleaner - Starter Set	8,41 kg	WELC1128

**Set contents**

Part nr.	Description	Starter Set
n/a	PowerONE weld-cleaner (machine only)	x
WELC2907	Lead with handle 4M, 80A (x-connector)	x
WELC2919	Lead with earth clamp 4M, 80A (x-connector)	x
WELC2470	Wand/twist shroud set (for 1x M8 brush)	x
WELC2005	Acid pot 500ml with lid	x
WELC2149	Microfiber cloth - 40x40cm (orange)	x
WELC2150	Cougartron USB storage device	x
n/a	Power lead - country specific*	x
WELC2064	Transport case - Large	x
WELC5006	Foam insert for large transport case (WELC2064)	x
WELC3148	Furybrush (M8, 80A) -1pc**	x
WELC3081	CGT-550 Weld Cleaning & Polishing fluid - 1L	x

**Upgrade equipment & spares**

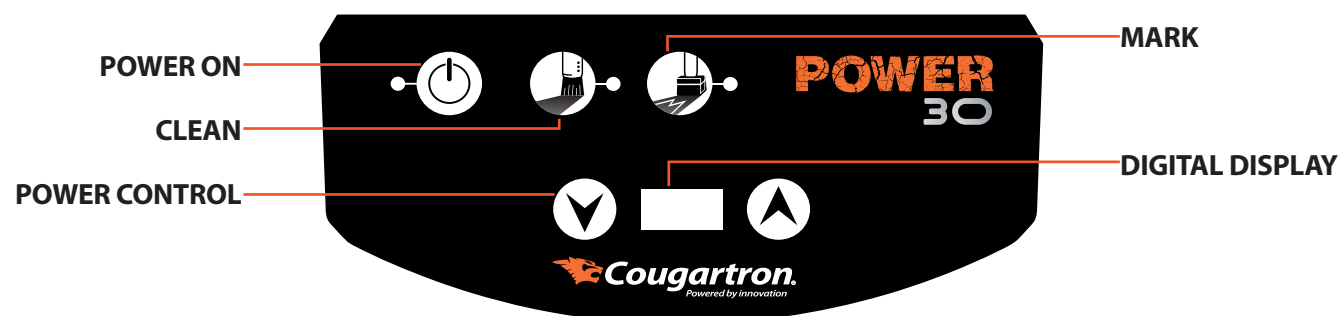
Part nr.	Description	Catalogue page
WELC1059	FL10 Fluid Feed system	34
WELC1060	FL20 Fluid Feed system	36
WELC2570	Mobile equipment stand	38
WELC2826	Mobile workstation	39
WELC2227	Twist shroud (for WELC2235 wand)	46

\* Machines & sets are supplied with the correct power lead(s) for the ship-to country.  
 \*\*Re-order 10-pack (WELC3149) for price savings - see page 45.

The Cougartron Power30 is an effective weld cleaner for all stainless steel TIG welds. This new weld cleaning machine effectively removes all types of weld discoloration with a convenient dual output voltage for two modes of weld cleaning.

**Key features:**

- Fast and effective cleaning power for all kinds of TIG welds.
- Easy integration with FL10 or FL20 fluid feed systems (see p. 34-36).
- 4m Work lead and earth lead as standard.
- Cougartron twist shroud as standard for smart, easy brush length control.
- Splash-proof membrane control panel is easily wiped clean.
- Compact & easily transportable.
- Dual input voltage – use the same machine on a 110V or 230V power supply.



**Technical Data**

Power supply: 110/230V version	110-230 V AC, 50/60Hz, 4A
Power supply: 110V version	N/A
Power supply: 230V version	N/A
Weld-cleaning: Amp range	5-30A, 5A increments
Weld-cleaning: Voltage range	10-14 V AC
Polishing: Amp range	N/A
Polishing: Voltage range	N/A
Marking: Amp range	2-10A, 2A increments
Marking: Voltage range	10 V AC
Duty cycle	100%
Detachable handle	No
Input cable length	1.5m
Output cable length	4m
Output cable Size	10mm <sup>2</sup>
Brush holder options	1
Fluid feed compatible	Yes
Size (machine only)	H (with handle up) 378mm, W 220mm, D 170mm
Enclosure protection	IP51
Certification	CE



**Set buying information**

Description	Weight	110 - 230V
Power30 Weld-cleaner - Basic Set	8,41 kg	WELC1070
Power30 Weld-cleaner - Starter Set A	15,28 kg	WELC1071
Power30 Weld-cleaner - Starter Set B	18,44 kg	WELC1072
Power30 Weld-cleaner - Starter Set C	20,64 kg	WELC1073

**Set contents**

Part nr.	Description	Basic Set	Starter Set A	Starter Set B	Starter Set C
n/a	Power30 weld-cleaner (machine only)	x	x	x	x
WELC2047	Lead with handle 4M, 50A (x-connector)	x	x	x	x
WELC2118	Lead with earth clamp 4M, 50A (x-connector)	x	x	x	x
WELC2226	Wand/twist shroud set (for 1x M6 brush)	x	x	x	x
WELC2005	Acid pot 500ml with lid	x	x	x	x
WELC2149	Microfiber cloth - 40x40cm (orange)	x	x	x	x
WELC2150	Cougartron USB storage device	x	x	x	x
n/a	Power lead - country specific*	x	x	x	x
n/a	Packaging - cardboard box w. Polystyrene insert	x			
WELC2064	Transport case - Large		x	x	x
WELC5006	Foam insert for large transport case (WELC2064)		x	x	x
WELC3092	Power-brush (M6, 30A) - 5 pieces**		x	x	x
WELC3081	CGT-550 Weld Cleaning & Polishing Fluid - 1L		x	x	x
WELC3165	CGT-N5 HyPerformance Neutralising Fluid - 500ml		x	x	x
WELC2092	Sprayer for spray bottle - orange		x	x	x
WELC2867	Cougartron acid resistant gloves - 1 pair		x	x	x
WELC2868	Cougartron safety glasses		x	x	x
WELC4045	Marking set for weld-cleaning machine (Standard)***			x	
STEN1029	Stencil voucher - max size 150x100mm			x	x
WELC4956	Marking set for weld-cleaning machine (Advanced)***				x

**Upgrade equipment & spares**

Part nr.	Description	Catalogue page
WELC1059	FL10 Fluid Feed system	34
WELC1060	FL20 Fluid Feed system	36
WELC2570	Mobile equipment stand	38
WELC2826	Mobile workstation	39
WELC2122	Extension lead, orange 4M, 50A (x-connector)	41
WELC2120	Extension lead, black 4M, 50A (x-connector)	41
WELC2227	Twist shroud (for WELC2235 wand)	46

\* Machines & sets are supplied with the correct power lead(s) for the ship-to country.

\*\*Re-order 10-pack (WELC3101) for price savings - see page 45.

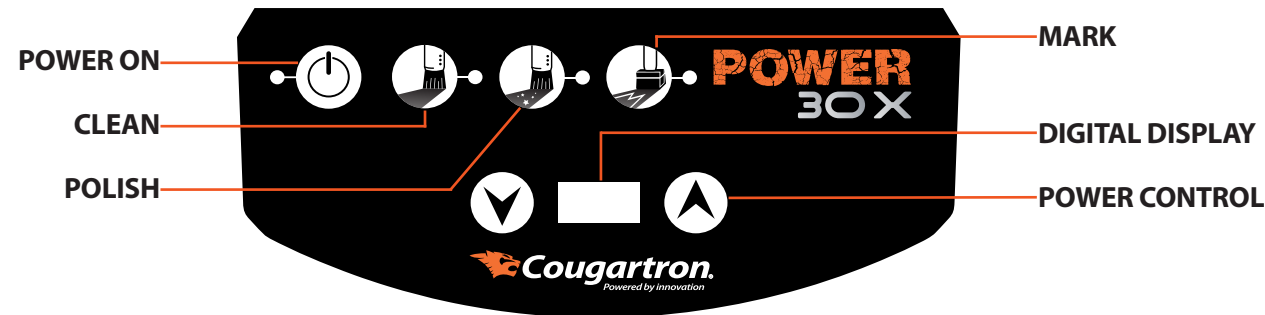
\*\*\* Refer to page 74 for the Marking Sets.



The Cougartron Power30X is a more versatile variant of the popular Power30. In addition to its excellent cleaning performance on all types of stainless TIG welds, the Power30X is also equipped with integrated polishing functionality. Effective removal of all types of weld discolouration with a convenient dual output voltage for two modes of weld cleaning.

**Key features:**

- Fast and effective cleaning power for all kinds of TIG welds.
- Easy integration with FL10 or FL20 fluid feed systems (see p. 34-36).
- Cougartron twist shroud as standard for smart, easy brush length control.
- Splashproof membrane control panel is easily wiped clean.
- Compact & easily transportable.
- Dual input voltage – use the same machine on a 110V or 230V power supply.



**Technical data**

Power supply: 110/230V version	110-230 V AC, 50/60Hz, 4A
Power supply: 110V version	N/A
Power supply: 230V version	N/A
Weld-cleaning: Amp range	5-30A, 5A increments
Weld-cleaning: Voltage range	10-14 V AC
Polishing: Amp range	5-30A, 5A increments
Polishing: Voltage range	10 V DC
Marking: Amp range	2-10A, 2A increments
Marking: Voltage range	10 V AC
Duty cycle	100%
Detachable handle	No
Input cable length	1.5m
Output cable length	4m
Output cable Size	10mm <sup>2</sup>
Brush holder options	1
Fluid feed compatible	Yes
Size (machine only)	H (with handle up) 378mm, W 220mm, D 170mm
Enclosure protection	IP51
Certification	CE



**Set buying information**

Description	Weight	110-230V
Power30X Weld-cleaner - Basic Set	8,41 kg	WELC1080
Power30X Weld-cleaner - Starter Set A	15,28 kg	WELC1081
Power30X Weld-cleaner - Starter Set B	18,44 kg	WELC1082
Power30X Weld-cleaner - Starter Set C	20,64 kg	WELC1083

**Set contents**

Part nr.	Description	Basic Set	Starter Set A	Starter Set B	Starter Set C
n/a	Power30X weld-cleaner (machine only)	x	x	x	x
WELC2047	Lead with handle 4M, 50A (x-connector)	x	x	x	x
WELC2118	Lead with earth clamp 4M, 50A (x-connector)	x	x	x	x
WELC2226	Wand/twist shroud set (for 1x M6 brush)	x	x	x	x
WELC2005	Acid pot 500ml with lid	x	x	x	x
WELC2149	Microfibre cloth - 40x40cm (orange)	x	x	x	x
WELC2150	Cougartron USB storage device	x	x	x	x
n/a	Power lead - country specific*	x	x	x	x
n/a	Packaging - cardboard box w. polystyrene insert	x			
WELC2064	Transport case - Large		x	x	x
WELC5006	Foam insert for large transport case (WELC2064)		x	x	x
WELC3092	Power brush (M6, 30A) - 5 pieces**		x	x	x
WELC3081	CGT-550 Weld Cleaning & Polishing Fluid - 1L		x	x	x
WELC3165	CGT-N5 HyPerformance Neutralising Fluid - 500ml		x	x	x
WELC2092	Sprayer for spray bottle - orange		x	x	x
WELC2867	Cougartron acid resistant gloves - 1 pair		x	x	x
WELC2868	Cougartron safety glasses		x	x	x
WELC4045	Marking set for weld-cleaning machine (Standard)***			x	
STEN1029	Stencil voucher - max size 150x100mm			x	x
WELC4956	Marking set for weld-cleaning machine (Advanced)***				x

**Upgrade equipment & spares**

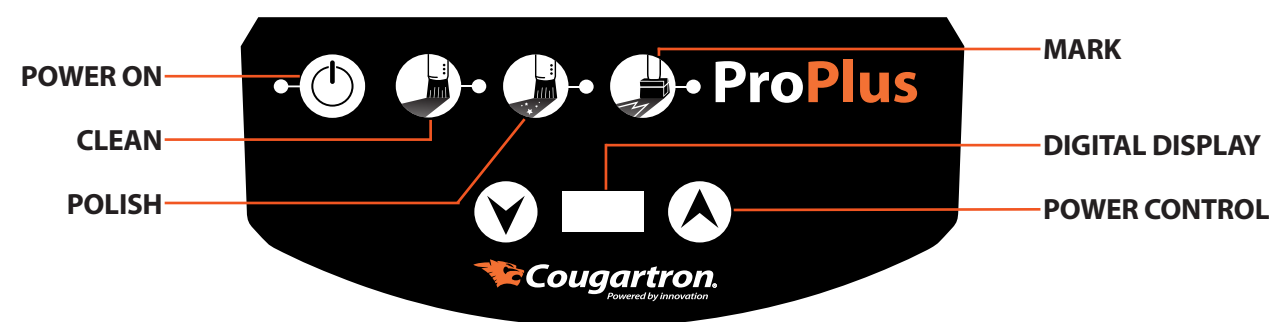
Part nr.	Description	Catalogue page
WELC1059	FL10 Fluid Feed system	34
WELC1060	FL20 Fluid Feed system	36
WELC2570	Mobile equipment Stand	38
WELC2826	Mobile workstation	39
WELC2122	Extension lead, orange 4M, 50A (x-connector)	41
WELC2120	Extension lead, black 4M, 50A (x-connector)	41
WELC2227	Twist shroud (for WELC2235 wand)	46

\* Machines & sets are supplied with the correct power lead(s) for the ship-to country.  
 \*\*Re-order 10-pack (WELC3101) for price savings - see page 45.  
 \*\*\* Refer to page 74 for the Marking Sets.

The Cougartron ProPlus has a reputation as a great all-rounder for a variety of industrial weld-cleaning, polishing and marking applications. 50A of cleaning power at 14V allows the ProPlus to quickly and effectively remove heavy TIG oxides and lighter MIG oxides. Choose ProPlus for a powerful weld-cleaner in a compact & user-friendly design.

**Key features:**

- Fast and effective cleaning power for all kinds of TIG welds & light MIG welds.
- Easy integration with FL10 or FL20 fluid feed systems (see p. 34-36).
- 4m work lead and earth lead as standard.
- Cougartron twist shroud as standard for smart, easy brush length control.
- Splashproof membrane control panel is easily wiped clean.
- Compact & easily transportable.



**Technical data**

Power supply: 110/230V version	N/A
Power supply: 110V version	110 V AC, 50/60Hz, 8A
Power supply: 230V version	240 V AC, 50/60Hz, 8A
Weld-cleaning: Amp range	5-50A, 5A increments
Weld-cleaning: Voltage range	14 V AC
Polishing: Amp range	5-50A, 5A increments
Polishing: Voltage range	14 V DC
Marking: Amp range	2-10A, 2A increments
Marking: Voltage range	14 V AC
Duty cycle	100%
Detachable handle	No
Input cable length	1.5m
Output cable length	4m
Output cable Size	10mm <sup>2</sup>
Brush holder options	1, 2
Fluid feed compatible	Yes
Size (machine only)	W 220mm, H 318mm, D 180mm
Enclosure protection	IP51
Certification	CE



**Set buying information**

Description	Weight	110V	230V
ProPlus Weld-cleaner - Basic Set	9,7 kg	WELC1090	WELC1094
ProPlus Weld-cleaner - Starter Set A	16,4 kg	WELC1091	WELC1095
ProPlus Weld-cleaner - Starter Set B	19,57 kg	WELC1092	WELC1096
ProPlus Weld-cleaner - Starter Set C	21,8 kg	WELC1093	WELC1097

**Set contents**

Part nr.	Description	Basic Set	Starter Set A	Starter Set B	Starter Set C
n/a	ProPlus weld-cleaner (machine only)	x	x	x	x
WELC2047	Lead with handle 4M, 50A (x-connector)	x	x	x	x
WELC2118	Lead with earth clamp 4M, 50A (x-connector)	x	x	x	x
WELC2226	Wand/twist shroud set (for 1x M6 brush)	x	x	x	x
WELC2005	Acid pot 500ml with lid	x	x	x	x
WELC2149	Microfiber cloth - 40x40cm (orange)	x	x	x	x
WELC2150	Cougartron USB storage device	x	x	x	x
n/a	Power lead - country specific*	x	x	x	x
n/a	Packaging - cardboard box w. Polystyrene insert	x			
WELC2064	Transport case - Large		x	x	x
WELC5006	Foam insert for large transport case (WELC2064)		x	x	x
WELC3145	Super brush (M6, 50A) - 5 pcs**		x	x	x
WELC3081	CGT-550 Weld Cleaning & Polishing Fluid - 1L		x	x	x
WELC3165	CGT-N5 HyPerformance Neutralising Fluid - 500ml		x	x	x
WELC2092	Sprayer for spray bottle - orange		x	x	x
WELC2867	Cougartron acid resistant gloves - 1 pair		x	x	x
WELC2868	Cougartron safety glasses		x	x	x
WELC4045	Marking set for weld-cleaning machine (Standard)***			x	
STEN1029	Stencil voucher - max size 150x100mm			x	x
WELC4956	Marking set for weld-cleaning machine (Advanced)***				x

**Upgrade equipment & spares**

Part nr.	Description	Catalogue page
WELC1059	FL10 Fluid Feed system	34
WELC1060	FL20 Fluid Feed system	36
WELC2570	Mobile equipment stand	38
WELC2826	Mobile workstation	39
WELC2122	Extension lead, orange 4M, 50A (x-connector)	41
WELC2120	Extension lead, black 4M, 50A (x-connector)	41
WELC2227	Twist shroud (for WELC2235 wand)	46

\* Machines & sets are supplied with the correct power lead(s) for the ship-to country.

\*\*Re-order 10-pack (WELC3146) for price savings - see page 45.

\*\*\* Refer to page 74 for the Marking Sets.



The Cougartron Fury series is designed for the toughest and most demanding industrial applications. With 100A of highly-adjustable cleaning & polishing power, the Fury100 will take all that you can throw at it, and come back asking for more!

**Key features:**

- Fast and effective cleaning power for all kinds of TIG and MIG weld seams.
- Robust design with tough case.
- Highly mobile with large-diameter rubber wheels.
- Easy to transport with collapsible steel handle.
- 6m Work lead and earth lead as standard.
- 1, 2-brush adaptors available.
- Highly adjustable – both amp and volt settings can be adjusted for optimal cleaning & polishing.



**Technical data**

Power supply: 110/230V version	N/A
Power supply: 110V version	110 V AC, 50/60Hz, 15A
Power supply: 230V version	240 V AC, 50/60Hz, 10A
Weld-cleaning: Amp range	20-100A, 20A increments
Weld-cleaning: Voltage range	10-16 V AC
Polishing: Amp range	20-100A, 20A increments
Polishing: Voltage range	10-12 V DC
Marking: Amp range	2-10A, 2A increments
Marking: Voltage range	12 V AC
Duty cycle	100%
Detachable handle	Yes
Input cable length	4m
Output cable length	6m
Output cable Size	35mm <sup>2</sup>
Brush holder options	1, 2
Fluid feed compatible	No
Size (machine only)	W 39cm, H 64cm (machine unit) / 116,5cm (unit with handle extended), D 33cm
Enclosure protection	IP51
Certification	CE



**Set buying information**

Description	Weight	110V	230V
Fury100 Weld-cleaner - Basic Set	50,0 kg	WELC1104	WELC1100
Fury100 Weld-cleaner - Starter Set A	51,0 kg	WELC1105	WELC1101
Fury100 Weld-cleaner - Starter Set B	54,3 kg	WELC1106	WELC1102
Fury100 Weld-cleaner - Starter Set C	55,5 kg	WELC1107	WELC1103

**Set contents**

Part nr.	Description	Basic Set	Starter Set A	Starter Set B	Starter Set C
n/a	Fury100 weld-cleaner (machine only)	x	x	x	x
WELC2064	Transport case - Large	x	x	x	x
WELC5006	Foam insert for large transport case (WELC2064)	x	x	x	x
WELC2577	Lead with handle 6M, 200A (dinse)	x	x	x	x
WELC2578	Lead with earth clamp 6M, 200A (dinse)	x	x	x	x
WELC2574	Drip Tray	x	x	x	x
WELC3048	CGT-550 Weld Cleaning & Polishing Fluid - 5L		x	x	x
WELC3158	CGT-N5 HyPerformance Neutralising Fluid - 5L		x	x	x
WELC2470	Wand/twist shroud set (for 1x M8 brush)		x	x	x
WELC2448	Wand/twist shroud set (for 2x M8 brush)		x	x	x
WELC3149	Fury brush (M8, 80A) - 10 pack		x	x	x
WELC2150	Cougartron USB storage device		x	x	x
WELC2201	Spray bottle with sprayer 0.5L (empty)		x	x	x
WELC2005	Acid pot 500ml with lid		x	x	x
WELC2630	Microfibre cloth - 70x70cm (orange)		x	x	x
WELC2867	Cougartron acid resistant gloves - 1 pair		x	x	x
WELC2868	Cougartron safety glasses			x	x
WELC4045	Marking set for weld-cleaning machine (Standard)*			x	
STEN1029	Stencil voucher - max size 150x100mm			x	x
WELC4956	Marking set for weld-cleaning machine (Advanced)*				x

**Extra equipment**

Part nr.	Description	Catalogue page
WELC2826	Mobile workstation	39

\* Refer to page 74 for the Marking Sets.

With 200A of cleaning power, the Fury200 is the king of the Cougartron weld-cleaning range. Designed for the toughest and most demanding industrial applications, the Fury200 is unbeatable in raw power and performance. Clean heavy gauge TIG and MIG weld seams with ease with this high-performance machine.

**Key features:**

- Fast and effective cleaning power for all kinds of TIG and MIG weld seams.
- Robust design with tough case.
- Highly mobile with large-diameter rubber wheels.
- Easy to transport with collapsible steel handle.
- 6m work lead and earth lead as standard.
- 1, 2 and 3-brush adaptors available.
- Highly adjustable – both amp and volt settings can be adjusted for optimal cleaning & polishing.



**Technical data**

Power supply: 110/230V version	N/A
Power supply: 110V version	110 V AC, 50/60Hz, 32A
Power supply: 230V version	240 V AC, 50/60Hz, 16A
Weld-cleaning: Amp range	20-200A, 20A increments
Weld-cleaning: Voltage range	10-16 V AC
Polishing: Amp range	20-200A, 20A increments
Polishing: Voltage range	10-12 V DC
Marking: Amp range	2-10A, 2A increments
Marking: Voltage range	12 V AC
Duty cycle	100%
Detachable handle	Yes
Input cable length	4m
Output cable length	6m
Output cable Size	35mm <sup>2</sup>
Brush holder options	1, 2, 3
Fluid feed compatible	No
Size (machine only)	W 39cm, H 64cm (machine unit) / 116,5cm (unit with handle extended), D 33cm
Enclosure protection	IP51
Certification	CE



**Set buying information**

Description	Weight	110V	230V
Fury200 Weld-cleaner - Basic Set	60,0 kg	WELC1114	WELC1110
Fury200 Weld-cleaner - Starter Set A	61,0 kg	WELC1115	WELC1111
Fury200 Weld-cleaner - Starter Set B	64,3 kg	WELC1116	WELC1112
Fury200 Weld-cleaner - Starter Set C	66,5 kg	WELC1117	WELC1113

**Set contents**

Part nr.	Description	Basic Set	Starter Set A	Starter Set B	Starter Set C
n/a	Fury200 weld-cleaner (machine only)	x	x	x	x
WELC2064	Transport case - Large	x	x	x	x
WELC5006	Foam insert for large transport case (WELC2064)	x	x	x	x
WELC2577	Lead with handle 6M, 200A (dinse)	x	x	x	x
WELC2578	Lead with earth clamp 6M, 200A (dinse)	x	x	x	x
WELC2574	Drip Tray		x	x	x
WELC3048	CGT-550 Weld Cleaning & Polishing Fluid - 5L		x	x	x
WELC3158	CGT-N5 HyPerformance Neutralising Fluid - 5L		x	x	x
WELC2470	Wand/twist shroud set (for 1x M8 brush)		x	x	x
WELC2448	Wand/twist shroud set (for 2x M8 brush)		x	x	x
WELC2313	Wand/twist shroud set (for 3x M8 brush)		x	x	x
WELC3149	Fury brush (M8, 80A) - 10 pack		x	x	x
WELC2150	Cougartron USB storage device		x	x	x
WELC2201	Spray bottle with sprayer 0.5L (empty)		x	x	x
WELC2005	Acid pot 500ml with lid		x	x	x
WELC2630	Microfibre cloth - 70x70cm (orange)		x	x	x
WELC2867	Cougartron acid resistant gloves - 1 pair		x	x	x
WELC2868	Cougartron safety glasses			x	x
WELC4045	Marking set for weld-cleaning machine (Standard)*			x	
STEN1029	Stencil voucher - max size 150x100mm			x	x
WELC4956	Marking set for weld-cleaning machine (Advanced)*				x

**Extra equipment**

Part nr.	Description	Catalogue page
WELC2826	Mobile workstation	39

\* Refer to page 74 for the Marking Sets.



Our FURY100 weld cleaner just received an upgrade – now featuring a fully integrated fluid feed system for faster and more convenient weld cleaning. The FURY100XF is available in standard 230V and 110V inputs. The 110V version enhances portability and usability in locations where stronger current inputs are unavailable. Despite the lower input voltage, the machine effectively cleans both light and dark MIG welds, making it a unique solution in the market.

**Key features:**

- Fully integrated fluid feed.
- TIG weld cleaning with a 100% duty cycle.
- MIG weld cleaning (up to 10mm thickness).
- Marking and Etching – compatible with the Cougartron Basic Etching Set
- Easy to transport with collapsible steel handle.
- 6m work lead and earth lead as standard.
- 1 and 2-brush adaptors available.
- Highly adjustable – both amp and volt settings can be adjusted for optimal cleaning & polishing.



**Technical data**

Power supply: 110/230V version	N/A
Power supply: 110V version	110 V AC, 50/60Hz, 15A
Power supply: 230V version	240 V AC, 50/60Hz, 10A
Weld-cleaning: Amp range	20-100A, 20A increments
Weld-cleaning: Voltage range	10-16 V AC
Polishing: Amp range	20-100A, 20A increments
Polishing: Voltage range	10-12 V DC
Marking: Amp range	2-10A, 2A increments
Marking: Voltage range	12 V AC
Duty cycle	100%
Detachable handle	Yes
Input cable length	4m
Output cable length	6m
Output cable Size	35mm <sup>2</sup>
Brush holder options	1, 2
Fluid feed compatible	Fully integrated
Size (machine only)	W 39cm, H 64cm (machine unit) / 116,5cm (unit with handle extended), D 33cm
Enclosure protection	IP51
Certification	CE



**Set buying information**

Description	Weight	110V	230V
Fury100XF Weld-cleaner - Basic Set	60,0 kg	WELC1134	WELC1130
Fury100XF Weld-cleaner - Starter Set A	61,0 kg	WELC1135	WELC1131
Fury100XF Weld-cleaner - Starter Set B	64,3 kg	WELC1136	WELC1132
Fury100XF Weld-cleaner - Starter Set C	66,5 kg	WELC1137	WELC1133

**Set contents**

Part nr.	Description	Basic Set	Starter Set A	Starter Set B	Starter Set C
n/a	Fury100XF weld-cleaner (machine only)	x	x	x	x
WELC2064	Transport case - Large	x	x	x	x
WELC5006	Foam insert for large transport case (WELC2064)	x	x	x	x
WELC2878	Lead with handle 6M, 200A (dinse w. fluid feed)	x	x	x	x
WELC2578	Lead with earth clamp 6M, 200A (dinse)	x	x	x	x
WELC2574	Drip Tray		x	x	x
WELC3048	CGT-550 Weld Cleaning & Polishing Fluid - 5L		x	x	x
WELC3158	CGT-N5 HyPerformance Neutralising Fluid - 5L		x	x	x
WELC2891	Wand/twist shroud set for fluid feed (1x M8 brush)		x	x	x
WELC2892	Wand/twist shroud set for fluid feed (2x M8 brush)		x	x	x
WELC3149	Fury brush (M8, 80A) - 10 pack		x	x	x
WELC2150	Cougartron USB storage device		x	x	x
WELC2201	Spray bottle with sprayer 0.5L (empty)		x	x	x
WELC2005	Acid pot 500ml with lid		x	x	x
WELC2630	Microfibre cloth - 70x70cm (orange)		x	x	x
WELC2867	Cougartron acid resistant gloves - 1 pair		x	x	x
WELC2868	Cougartron safety glasses			x	x
WELC4045	Marking set for weld-cleaning machine (Standard)*			x	
STEN1029	Stencil voucher - max size 150x100mm			x	x
WELC4956	Marking set for weld-cleaning machine (Advanced)*				x

**Extra equipment**

Part nr.	Description	Catalogue page
WELC2826	Mobile workstation	39

\* Refer to page 74 for the Marking Sets.

The Fury200XF, equipped with an integrated fluid feed, stands as one of the top choices among our weld cleaning machines, making your cleaning tasks faster and more effective. It's designed to handle tough industrial jobs with unmatched power and performance. Easily clean heavily oxidized TIG/MIG welds and achieve top-notch results by exploring the full potential of this powerful weld cleaner. Control the amount of fluid delivered to your brush using the practical display screen.

**Key features:**

- Fully integrated fluid feed.
- Fast and effective cleaning power for all kinds of TIG and MIG weld seams.
- Robust design with tough case.
- Highly mobile with large-diameter rubber wheels.
- Easy to transport with collapsible steel handle.
- 6m work lead and earth lead as standard.
- 1, 2 and 3-brush adaptors available.
- Highly adjustable – both amp and volt settings can be adjusted for optimal cleaning & polishing.



**Technical data**

Power supply: 110/230V version	N/A
Power supply: 110V version	110 V AC, 50/60Hz, 32A
Power supply: 230V version	240 V AC, 50/60Hz, 16A
Weld-cleaning: Amp range	20-200A, 20A increments
Weld-cleaning: Voltage range	10-16 V AC
Polishing: Amp range	20-200A, 20A increments
Polishing: Voltage range	10-12 V DC
Marking: Amp range	2-10A, 2A increments
Marking: Voltage range	12 V AC
Duty cycle	100%
Detachable handle	Yes
Input cable length	4m
Output cable length	6m
Output cable Size	35mm <sup>2</sup>
Brush holder options	1, 2, 3
Fluid feed compatible	Fully integrated
Size (machine only)	W 39cm, H 64cm (machine unit) / 116,5cm (unit with handle extended), D 33cm
Enclosure protection	IP51
Certification	CE



**Set buying information**

Description	Weight	110V	230V
Fury200XF Weld-cleaner - Basic Set	60,0 kg	WELC1124	WELC1120
Fury200XF Weld-cleaner - Starter Set A	61,0 kg	WELC1125	WELC1121
Fury200XF Weld-cleaner - Starter Set B	64,3 kg	WELC1126	WELC1122
Fury200XF Weld-cleaner - Starter Set C	66,5 kg	WELC1127	WELC1123

**Set contents**

Part nr.	Description	Basic Set	Starter Set A	Starter Set B	Starter Set C
n/a	Fury200XF weld-cleaner (machine only)	x	x	x	x
WELC2064	Transport case - Large	x	x	x	x
WELC5006	Foam insert for large transport case (WELC2064)	x	x	x	x
WELC2878	Lead with handle 6M, 200A (dinse w. fluid feed)	x	x	x	x
WELC2578	Lead with earth clamp 6M, 200A (dinse)	x	x	x	x
WELC2574	Drip Tray		x	x	x
WELC3048	CGT-550 Weld Cleaning & Polishing Fluid - 5L		x	x	x
WELC3158	CGT-N5 HyPerformance Neutralising Fluid - 5L		x	x	x
WELC2891	Wand/twist shroud set for fluid feed (1x M8 brush)		x	x	x
WELC2892	Wand/twist shroud set for fluid feed (2x M8 brush)		x	x	x
WELC2834	Wand/twist shroud set for fluid feed (3x M8 brush)		x	x	x
WELC3149	Fury brush (M8, 80A) - 10 pack		x	x	x
WELC2150	Cougartron USB storage device		x	x	x
WELC2201	Spray bottle with sprayer 0.5L (empty)		x	x	x
WELC2005	Acid pot 500ml with lid		x	x	x
WELC2630	Microfibre cloth - 70x70cm (orange)		x	x	x
WELC2867	Cougartron acid resistant gloves - 1 pair		x	x	x
WELC2868	Cougartron safety glasses			x	x
WELC4045	Marking set for weld-cleaning machine (Standard)*			x	
STEN1029	Stencil voucher - max size 150x100mm			x	x
WELC4956	Marking set for weld-cleaning machine (Advanced)*				x

**Extra equipment**

Part nr.	Description	Catalogue page
WELC2826	Mobile workstation	39

\* Refer to page 74 for the Marking Sets.



## Why automatic fluid feed will change your weld cleaning experience:

Electrochemical **weld cleaning** is a quick and efficient oxide removal method. But what if you could make it even **faster**? Our automatic fluid feed systems allow you to do just that.

With the introduction of the FL20 - the integrated version of the FL10 system - you now have two automatic fluid feed options at your disposal. We will delve into the benefits of automatic fluid feed systems below and discuss the main characteristics and differences between the two Cougartron models.

## How will my weld cleaning become more convenient with automatic fluid feed?

Electrochemical weld cleaning and polishing are best performed using circular brush movements along the weld seam. Until now, the process inevitably included constant stopping and dipping the brush into the electrolytic liquid. This stop and dip technique sometimes posed a real nuisance during long working hours and demanding projects. Not anymore.

Our fluid feed systems are designed to eliminate this exact problem and provide our customers with a faster, more efficient, and, above all, more convenient way of weld cleaning.

## What are the advantages of automatic fluid feed?

The most outstanding advantage of automatic fluid feeding is the lack of need to constantly dip the brush into the weld cleaning fluid. The benefit of this is especially noticeable during long-term cleaning of longer welds and larger metal surfaces. Your **productivity goes up** while time consumption is significantly reduced. **It's a real game changer for your lead times.**

## Who is it for?

The systems are great for **anyone doing weld cleaning**. This being said, we are fully aware that smaller production facilities with limited work hours may not see it as a worthy investment. However, if you do more than five hours of weld cleaning per week – you will certainly want to reap the benefits of automatic fluid feeding. This also depends on the type of work you do.



If you are dealing with demanding welds – larger metal structures, longer linear welds, and heavily-oxidized surfaces – our fluid feed systems will work like a charm. The FL20 also gives you the ability to carry the entire system with you using a single handle which is especially useful in tight work areas and on taller structures (e.g. stainless steel tanks).

## Differences between FL10 and FL20

**Both models essentially do the same thing** – they transfer the fluid from the container to your brush tip and eliminate the need to constantly stop your work and dip the brush manually. However, they differ in terms of how they are attached to your weld cleaner.

**The FL10 is a separate unit** placed alongside your machine and the fluid container. The setup is rather spread up out within your work area as you'll basically work with and handle three different components included in the process.

The new model – **FL20 – is an integrated version of the former**. It is attached to your machine with the help of only four screws so you can move both units at the same time using a single handle. It also possesses a practical storage area for the fluid container which brings a new level of compactness to the system.

The FL20 conveniently combines three separate components into a single unit that is easily handled and moved around. For additional practicality points, the pump and the machine are both turned on/off using a single power switch and plug.

The control panels for the two are placed next to each other so you can easily switch between the work modes and speeds according to your current needs.

All things considered, the FL10 is clearly an option for a stationary type of work where you do not need to move the system a lot. On the other hand, the FL20 is equally usable in different production scenarios.

Thanks to its compactness, you can use it in tight and confined areas as well as taller and less-reachable metal structures. It will also take up less space in your workshop as it is completely integrated with your weld cleaner.

"This is a great product and I can definitely recommend this to others! We have saved so much time! No more dipping, just automatic fluid feed for us!"



Not only is this smart and compact fluid feed system compatible with all weld cleaners in the Cougartron range, but it also works with other brands. This solution transforms your weld cleaner into a system with fully integrated fluid feed functionality. The fluid pump is activated automatically as soon as you apply your brush to the workpiece. The fluid pump starts automatically when you touch your cleaning brush to the workpiece. The feed rate is continuously optimised throughout the cleaning process using a smart current monitoring system.

**How can I incorporate FL10 and FL20 in my workflow?**

Both models are easily incorporated in your workflow as they serve as productivity-enhancing accessories to your existing weld cleaning setup. They don't take up much space, which means you won't have to make any major changes to your work environment. FL10 and FL20 are both supplied in starter packs equipped with all the necessities you need to start using the fluid feed functionality straight away – with no unnecessary hassle.

**How is it maintained?**

Before using the fluid feed for the first time, the system requires priming – removing air and filling the tube. This is done using the priming mode with a duration of approximately 2 minutes. You will also need to rinse the tubes and activate the priming mode after each weld cleaning session. This is the best way to properly maintain your system and prevent the tube from clogging.

Technical data	
Power supply	110-230 V AC, 50/60Hz, 1A
Amp range detection	1-80A
Voltage range detection	1-30 V AC/DC
Priming function	Yes
Manual pumping	Yes
Auto pumping	Yes (3 modes)
Input cable length	1.5m
Output cable length	4m
Output cable Size	10mm <sup>2</sup>
Brush holder options	1
Size (machine only)	L 180mm, W 150mm, H 70mm
Weight (machine only)	0,79 kg
Compatibility	Entry level and Precision range

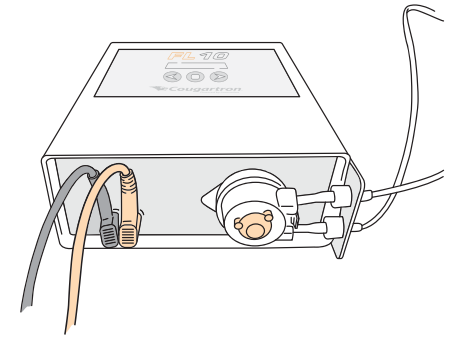


**Key features:**

- Fluid pumped to the brush tip via tubing integrated in the work cable.
- Fully automatic start/stop of fluid flow.
- Real-time fluid volume monitoring with several modes.
- Priming & purging function.
- Easy maintenance and replacement of key components.
- Dual input voltage – use the FL10 on 110V or 230V power supplies.

We **highly recommend** using the FL10 together with the following products:

- Mobile equipment stand (see p. 38).
- Mobile workstation (see p. 39).



**Set buying information**

Description	Weight	Part nr.
FL10 Fluid Feed system - Starter Set A	5,3 kg	WELC1059
FL10 Fluid Feed system - Starter Set B	19,1 kg	WELC1069
FL10 Fluid Feed system - Starter Set C	28,0 kg	WELC1076

**Set contents**

Part nr.	Description	Starter Set A	Starter Set B	Starter Set C
n/a	FL10 fluid feed system - Pump unit only	x	x	x
n/a	Power lead - country specific*	x	x	x
WELC2063	Transport case - Medium	x	x	x
WELC5025	Foam insert	x	x	x
WELC2709	CGT 10mm <sup>2</sup> Fluidhose Assembly x 4M w/ handle	x	x	x
WELC2397	Cougartron Fluid Feed Wand with Twist Shroud	x	x	x
WELC2699	CGT AC Current Clamp 200amp	x	x	x
WELC2714	CGT FL10 Infeed fluid hose assembly	x	x	x
WELC2149	Cougartron microfibre cloth - 40x40cm (black)	x	x	x
WELC2570	Mobile equipment stand		x	
WELC2743	Mobile workstation			x

**Additional spares**

Part nr.	Description
WELC2628	Replacement pump (2mm ID tube)
WELC2460	Twist shroud (for WELC2397 wand)
WELC2906	Cleaning fluid bottle w. drilled cap - 1L
WELC2905	Cleaning fluid bottle w. drilled cap - 5L
WELC2461	Dispenser for Fluid Feed Wand (M6 brush)



This integrated solution transforms your weld-cleaner to a system with fully-automatic fluid-feed functionality. The fluid pump starts automatically when you touch your cleaning brush to the work-piece. The feed rate is continuously optimised throughout the cleaning process using a smart current monitoring system.

**How does it work?**

While using an automatic fluid feed system, the fluid is delivered directly to the brush tip via a pump that is connected to your machine. The pump is stepper motor-controlled and gives you the ability to regulate the amount of fluid being fed to the brush – giving you more control over the entire process. You can choose between 5 modes to adjust the amount of fluid being pumped which makes the system applicable during tasks that vary in scope and scale. For example, lighter and less-oxidized welds require less fluid. On the other hand, thicker and heavily-corroded welds demand a higher fluid consumption. With a dosing range of 5-8 ml/minute at your disposal, you can adjust the system perfectly to your needs.

The fluid flow is regulated according to the output current drawn, meaning that the pump only starts once there is current going through the lead, which means that there is less fluid waste.

Thanks to its compactness, you can use it in tight and confined areas as well as taller and less-reachable metal structures. It will also take up less space in your workshop as it is completely integrated with your weld cleaner.

Technical data	
Power supply	110-230 V AC, 50/60Hz, 1A
Amp range detection	1-80A
Voltage range detection	1-30 V AC/DC
Priming function	Yes
Manual pumping	Yes
Auto pumping	Yes (3 modes)
Input cable length	1.5m
Output cable length	4m
Output cable Size	10mm <sup>2</sup>
Brush holder options	1
Size (machine only)	L 225mm, W 220mm, H 318mm
Weight (machine only)	5,3 kg
Compatibility	Entry level and Precision range



**Key features:**

- Connects to PowerONE, Power30, Power30X and ProPlus models for a highly integrated solution.
- Fluid pumped to the brush tip via tubing integrated in the work cable.
- Fully automatic start/stop of fluid flow.
- Real-time fluid volume monitoring with several modes.
- Priming & purging function.
- Easy maintenance and replacement of key components.



**Set buying information**

Description	Weight	Part nr.
FL20 Fluid Feed system - Starter Set A	7,1 kg	WELC1060
FL20 Fluid Feed system - Starter Set B	29,8 kg	WELC1068

**Set contents**

Part nr.	Description	Starter Set A	Starter Set B
n/a	FL20 Fluid Feed system - Pump unit only	x	x
n/a	Power lead - country specific*	x	x
WELC2709	Lead w/ handle 4M, fluid feed, 50A (x-con.)	x	x
WELC2397	Wand/shroud fluid feed (for 1x M6 brush)	x	x
WELC2149	Cougartron microfibre cloth - 40x40cm (black)	x	x
WELC2743	Mobile workstation		x

**Additional spares**

Part nr.	Description
WELC2628	Replacement pump (2mm ID tube)
WELC3233	FL20 replacement tube kit
WELC2460	Twist shroud (for WELC2397 wand)
WELC5037	Cleaning fluid bottle w. drilled cap - 1L

**Compatible with:**

Part nr.	Machine
WELC1128	PowerONE
WELC1071	Power30
WELC1081	Power30X
WELC1095	Proplus

The mobile equipment stand is a must-have accessory for frequent users of Cougartron weld-cleaners. Best suited to workshop-based weld-cleaning, this smart stand features machine mounts for Power30, Power30X, ProPlus and also some discontinued machine models. It also includes mounts for fluids & the FL10 fluid feed system.

**Key features:**

- All-in-one mobile solution for your weld cleaner.
- Single power supply with extra power socket.
- Robust modular construction.
- Compatible with FL10 automatic fluid feed unit.
- Large grab handle to the rear – easy to move and ‘steer’ the stand.

**Buying information**

Part nr.	Description
WELC2570	Mobile Equipment Stand

**Spares**

Part nr.	Description
WELC3228	MES machine holder bracket set
WELC2800	MES wheel w/ brake (1 piece)
WELC2799	MES wheel w/o brake (1 piece)
WELC2808	MES acid pot holder
WELC2776	MES wand holder
WELC2807	MES neutraliser holder
WELC2809	MES fluid feed unit holder
WELC2810	MES cable hook

**Technical data**

Measurements	
Dimensions	H 795mm, D 355mm, W 445mm
Weight	13,8 kg



Image for illustrative purposes only. Machine and consumables are not included.

The workstation features a stainless steel work area to which you can attach the earth clamp – so you don’t have to attach it to the workpiece. The workstation is equipped with an integrated fluid collection system with a 5L capacity. When full, you simply remove the container and screw the lid on to make the disposal of waste fluid faster, cleaner, and safer. Thanks to its wheels, the workstation is easily moved around your workshop. An integrated tool holder provides a practical place to hang the wand and handle while not in use to ensure no short circuit damage to the machine.

**Key features:**

- Robust, acid resistant PPE construction.
- Stainless steel perforated work surface and stainless steel fluid collection tray.
- Waste fluid flows down a tube and is collected in a container in the base of the workstation.
- Spacious lower shelf for the machine, fluid collection, consumables, and optional items.

**Buying information**

Part nr.	Description
WELC2889	Cougartron weld cleaning workstation

**Refills & Spares**

Part nr.	Description
WELC2745	Workstation top panel
WELC2744	Drain tray with outlet
WELC2776	Wand holder –black plastic
WELC2827	PU hose 7mm
WELC5017	Fluid waste container with black lid

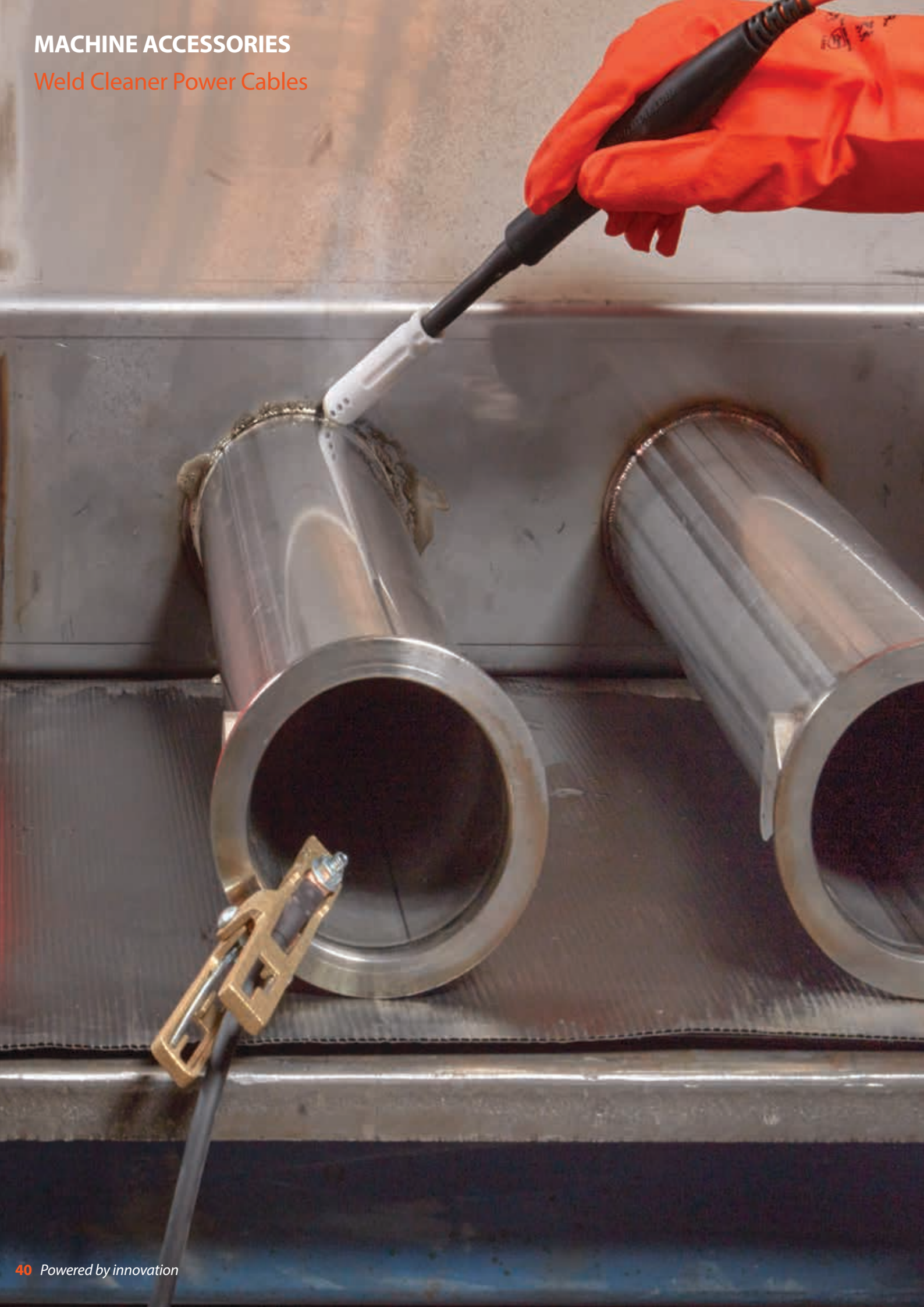
**Technical data**

Measurements	
Length	950 mm
Height	850 mm
Weight	21,87 kg



Image for illustrative purposes only. Machine and consumables are not included in set options.





Visit the machine page in this catalogue, to see the standard spares and consumables compatible with your machine.

**Weld cleaner Power Cables**

Introducing our high-quality weld cleaner power cables designed to enhance your weld cleaning experience. Choose from our versatile selection:

Part nr.	Item	Compatible with:
WELC2047	Lead with handle 4M, 50A (x-connector)	Power30 & Power30X
WELC2577	Lead with handle 6M, 200A (dinse)	Fury100 & Fury200
WELC2709	Lead w/ handle 4M, fluid feed, 50A (x-con.)	FL10 & FL20
WELC2878	Lead with handle 6M, 200A (dinse)(with fluid feed)	Fury100XF & Fury200XF
WELC2919	Lead with handle 4M, 80A (x-connector)	PowerONE



**Weld cleaner Earth Leads**

Part nr.	Item	Compatible with:
WELC2118	Lead with earth clamp 4M, 50A (x-connector)	Proplus, Power30 & Power30X.
WELC2907	Lead with earth clamp 4M, 80A (dinse)	PowerONE
WELC2578	Lead with earth clamp 6M, 200A (dinse)	Fury100 & Fury200



**Weld cleaner Extension Cables**

Part nr.	Item	Compatible with:
WELC2120	Extension cable, black 4M, 50A (x-connector)	Proplus, Power30 & Power30X.
WELC2122	Extension cable, orange 4M, 50A (x-connector)	Proplus, Power30 & Power30X.
WELC2579	Extension cable, orange 6M, 200A (dinse)	Fury100 & Fury200
WELC2580	Extension cable, black 6M, 200A (dinse)	Fury100 & Fury200



**Power Leads**

Part nr.	Item
WELC2025	IEC power lead 1.8M 230V (DK)
WELC2026	IEC power lead 1.8M 230V (EU)
WELC2200	IEC power lead 1.8M 230V (UK)
WELC2221	IEC Power lead 1.8M 110V (UK)
WELC2231	IEC power lead 1.8M 230V (AU/NZ)
WELC2480	IEC power lead 1.8M 230V (BR)
WELC2212	IEC power lead 6ft 110V (USA)



Fluid Accessories

Part nr.	Item
WELC2149	Microfibre cloth - 40x40cm (orange)
WELC2630	Microfibre cloth - 70x70cm (orange)



The ultimate cleaning essential. This high-performance cloth effortlessly removes dust, fingerprints, and smudges from surfaces without scratching. Versatile and durable, it provides streak-free results for various applications. Elevate your cleaning routine with the precision and quality of our Microfiber Cloth.

Part nr.	Item
WELC2005	Acid pot 500ml with lid



This acid-resistant container is used to hold weld cleaning fluid during weld cleaning or polishing process. Supplied together with an airtight leak-proof lid.

Part nr.	Item
WELC2201	Spray bottle with sprayer 0.5L (empty)
WELC2092	Sprayer for spray bottle - orange



Spray bottle for all our neutralizing and finishing fluids. The sprayer helps distribute the fluid consistently across the metal surface. Replacement sprayer for the Cougartron spray or neutralizer 1Pint bottle.

Part nr.	Item
WELC3021	Copper grease 20g



Cougartron Copper Grease has a heat-resistant and anti-seize effect and it also maintains connectivity. It should be applied regularly on wand threads, brush threads, and cable connections.

Transport Cases

Part nr.	Description	External dimensions
WELC2211	Transport Case - Small	33 x 12,5 x 28 cm
WELC2063	Transport Case - Medium	44 x 17 x 39,5 cm
WELC2064	Transport Case - Large	53 x 21,5 x 42 cm
WELC2404	Transport Bag	40 x 20 x 26,5 cm

Information on the appropriate transport case for each machine can be found on the corresponding machine pages within the catalog. Please note that certain machine sets may require larger transport cases to accommodate all accessories and spare parts. If you wish to order a separate case, please consult the table above to find the right solution for your equipment.



“It’s really helpful to have a supplier we can rely on to quickly organize the consumables we need throughout the year. We order them multiple times, and having a dedicated contact person makes the process smooth and efficient.”



## WELD CLEANING BRUSHES

Weld Cleaning Brushes



## Weld-Cleaning brushes

### Long-life brushes

Cougartron brushes have an average lifetime of 5-8 hours, effectively cleaning up to 1000 linear meters of welds.

### Powerbrush

Part nr.	Item
WELC3101	Powerbrush (M6, 30A) - 10pcs
WELC3105	Powerbrush (M6, 30A, SS Crimp) 10pcs

The popular Power brush has been developed and fine-tuned to get the best performance from Cougartron Weld Cleaners. It delivers excellent results during weld cleaning (and electropolishing) on less oxidized and low-contaminated TIG welds. It performs best at 0-30Amps settings – recommended to use with: Cougartron Power30 and Power30X.



## WELD CLEANING BRUSHES

Weld Cleaning Brushes

### Superbrush

Part nr.	Item
WELC3146	Superbrush (M6, 50A) - 10pcs
WELC3151	Superbrush (M6, 50A, SS Crimp) - 10pcs

Very popular and effective weld cleaning and polishing brush for lighter (1-3mm) TIG welds. The brush comes in stainless steel crimp and copper crimp variation. Best used at an output of 0-30 Amps.



### Furybrush

Part nr.	Item
WELC3149	Furybrush (M8, 80A) - 10pcs
WELC3213	Furybrush (M8, 80A, SS Crimp) - 10pcs

Effective weld cleaning brush for long and heavily-corroded TIG and MIG welds. Used exclusively with Cougartron FURY weld cleaner at an output of 80-200 Amps for weld cleaning and electropolishing. Thick weld cleaning brush with a dense fiber structure to help cover larger surface area. It is used in more demanding weld cleaning operations (50-80 Amps power output).

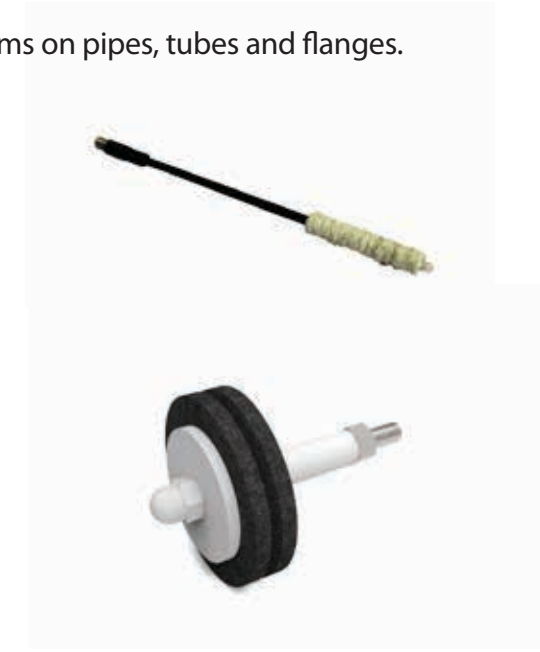


### Pipebrushes

The Pipebrush is an innovative solution for cleaning internal weld seams on pipes, tubes and flanges. Versatile and suitable for a variety of advanced applications.

Part nr.	Item
WELC3152	Pipebrush - Ø6mmx50mm long, 100mm shaft
WELC3131	Pipebrush - Ø8mmx50mm long, 100mm shaft
WELC3153	Pipebrush - Ø10mmx50mm long, 100mm shaft
WELC3154	Pipebrush - Ø12mmx50mm long, 100mm shaft
WELC3258	Pipebrush - Ø15mmx50mm long, 50mm shaft
WELC3259	Pipebrush - Ø18mmx50mm long, 50mm shaft
WELC3260	Pipebrush - Ø25mmx50mm long, 50mm shaft
WELC3261	Pipebrush - Ø40mmx50mm long, 50mm shaft
WELC3262	Pipebrush - Ø50mmx90mm long, 50mm shaft

Efficient weld cleaning brushes designed for hard-to-reach welds and interior surfaces of pipes and tubes. Available in various sizes for your convenience.



WELD CLEANING

Using the correct brush accessory for your application will improve process efficiency and enhance work precision and flexibility.

**These accessories can be used with PowerONE, Power30, Power30X and ProPlus models. We recommend minimum 50A (ProPlus) for 2 and 4-brush configurations.**

**Brush accessories for M6 brushes**

Part nr.	Item
WELC2226	Wand/twist shroud set (for 1x M6 brush)
WELC2235	Wand only (for 1x M6 brush)
WELC2227	Twist shroud (for WELC2235 wand)



With Cougartron twisting shroud you have more control over your brush than ever – this unique twist design means that you can precisely choose and control the brush length. The twist shroud allows you to precisely control the length of the brush tip and extend the life of your weld cleaning brush. The handle is not included.

Part nr.	Item
WELC2006	Adapter (for 2x M6 brush)



Cougartron double brush adaptor holds two brushes at the same time to cover a larger surface area, and to achieve faster weld cleaning & polishing results.

Please note: We recommend the 3-brush configuration for use on flat surfaces only, rather than internal corners, due to its wide profile. 1,2 and 4-brush configurations are flat, and much better suited to internal corner weld seam applications.

**These accessories can be used with the Fury100 and Fury200 machines.**

**Brush accessories for M8 brushes**

Part nr.	Item
WELC2470	Wand/twist shroud set (for 1x M8 brush)
WELC2545	Twist shroud (for WELC2547 wand)
WELC2891	Wand/twist shroud (for 2x M8 brush, fluid feed)

Cougartron FURY Twisting Shroud Set for a single FURY 200A brush. The twisting shroud allows you to precisely control the length of the brush and protect it from damage.



Part nr.	Item
WELC2448	Wand/twist shroud set (for 2x M8 brush)
WELC2572	Twist shroud (for WELC2448 wand set)
WELC2892	Wand/twist shroud (for 2x M8 brush, fluid feed)

A special double brush set to hold two FURY 200A brushes at the same time for faster and more effective weld cleaning.



Part nr.	Item
WELC2313	Wand/twist shroud set (for 3x M8 brush)
WELC2327	Twist shroud (for WELC2326 wand)
WELC2834	Wand/twist shroud (for 3x M8 brush, fluid feed)

The FURY 3 Brush assembly was designed to hold three FURY brushes at the same time during the weld cleaning and electropolishing process.



Part nr.	Item
WELC2457	Wand/twist shroud set (for 4x M8 brush)
WELC2547	Wand only (M8 universal) Included in the following wand sets: WELC2188, WELC2214, WELC2470
WELC2572	Twist shroud only (universal for 2x brush) Included in the following wand sets: WELC2188, WELC2448
WELC2573	Twist shroud only (universal for 4x brush) Included in the following wand sets: WELC2214, WELC2457

Clean welds and surfaces four times faster with the new FURY Quad Brush Set. The Set consists of FURY Wand with Quad Brush adapter and a special twisting shroud to hold the brushes in place.





## WELD CLEANING BRUSHES

Brush Accessories (cont).



## WELD CLEANING BRUSHES

Brushes Accessories (cont).

WELD CLEANING

Cougartron weld cleaning brushes provide **fast and consistent results** on stainless steel welds and surfaces. Now you can maximize their effect by using our innovative line of dedicated weld cleaning brush accessories. With our specialized brush adapters, you can now use from 2 to 4 brushes simultaneously for faster and **more effective cleaning** results. To keep your brush protected and easily controllable during weld cleaning, Cougartron developed a unique twisting shroud design that will also shield brush bristles from damage and increase their longevity.

All brush accessories are high heat-resistant and **easy to maintain**.

Part nr.	Item
WELC2633	Flexible wand (1x M6 brush)



New flexible wand for weld cleaning brushes. A perfect solution to cleaning outside and inside pipes, corners, and hard-to-reach areas. This wand allows you to position the brush at any angle thanks to its flexible rubber-coated shaft.

Part nr.	Item
WELC2546	M8 to M6 adaptor



M6 adaptor allows connecting all Cougartron weld cleaning brushes to the Cougartron FURY Wand that is made originally for the FURY 200A cleaning brush (with M8 thread).

Part nr.	Item
WELC2175	45 degree brush adaptor
WELC2014	90 degree brush adaptor
WELC2199	135 degree brush adaptor



Position the tip of your weld cleaning brush at an angle of 45°, 90° or 135° degrees to clean hard-to-reach areas, welds, and surfaces easily.

Part nr.	Item
WELC2050	Single short brush shroud - fixed
WELC2038	Single long brush shroud - fixed



The long brush shroud protects the crimp of the brush and prevents the fibers on a new brush from being damaged. The shroud was developed to be used together with Cougartron angle adaptors to clean hard-to-reach areas and surfaces effectively.





## Weld-Cleaning and Polishing Fluids

Cougartron's weld-cleaning & polishing fluids are the product of years of innovation and optimisation. The cleaning fluid is a key part of the weld-cleaning process, designed to give you great results, every time.

### CGT-550 Weld-Cleaning and Polishing Fluid

Part nr.	Item
WELC3081	CGT-550 Weld Cleaning & Polishing Fluid - 1L
WELC3048	CGT-550 Weld Cleaning & Polishing Fluid - 5L



CGT-550 is our most popular weld cleaning fluid, offering unmatched cleaning and electropolishing performance while providing a far safer alternative to pickling paste. The fluid has undergone numerous passivation tests and is NSF approved for use in the food and beverage industry. The CGT-550 is NSF approved.

### CGT-350 Weld-Cleaning and Polishing Fluid

Part nr.	Item
WELC3083	CGT-350 Weld Cleaning Fluid - 1L
WELC3050	CGT-350 Weld Cleaning Fluid - 5L



CGT-350 is a milder version of the CGT-550 fluid and is suitable for air transport. This effective fluid provides excellent results on all types of stainless steel TIG welds. It contains a lower concentration of phosphoric acid, resulting in a low-hazard classification. The CGT-350 is NSF approved.

### CGT-650 Electro Passivation Powder

Part nr.	Item
WELC3238	CGT-650 Electro Passivation Powder - 70 grams



CGT-650 is a convenient powder utilized with water to create weld cleaning solutions when conventional fluid storage and transportation are impractical. Combine 70 grams of CGT-650 with 1 liter of water to produce 1 liter of weld cleaning fluid – with the same potency as our CGT-350.

**FACT:** Both CGT-350 and CGT-550 contain technical and food-grade phosphoric acid. They are NSF certified, which means they meet the high standards for use in food and pharmaceutical production.





## Neutralising Fluid

### CGT-N5 HyPerformance neutralising fluid

CGT-N5 contains a potent new formula designed to successfully neutralize metal surfaces and prevent the (re)appearance of white marks after weld cleaning, marking, and electropolishing. The fluid is especially effective on brushed stainless steel, thoroughly penetrating all crevices and removing all traces of acidity.

#### Benefits of the CGT-N5 Fluid:

- N5 is a non flammable degreaser suitable for pre-cleaning weld joints.
- Eliminates need for water during the electrochemical cleaning process.
- Neutralises all other phosphoric cleaning fluids on the market.
- Residual neutraliser dissipates without streaking.
- Suitable for cleaning and degreasing all stainless steel surfaces.
- Industrial strength.
- Bio friendly.
- Safe for use on all stainless steel surfaces.
- NSF - Approved

Neutralization is crucial in preventing acid from affecting the surface of stainless steel after processes such as weld cleaning, marking, and polishing. CGT-N5 effectively restores the pH neutrality of your welds and surfaces, making them highly resistant to corrosion.

**The CGT-N5 is NSF approved which means its safe to use in food and pharmaceutical production.**

Part nr.	Item
WELC3165	CGT-N5 HyPerformance Neutralising Fluid - 500ml
WELC3158	CGT-N5 HyPerformance Neutralising Fluid - 5L

#### Often bought together:

Part nr.	Item
WELC2201	Spray bottle with sprayer 0.5L (empty)
WELC2092	Sprayer for spray bottle - orange
WELC2867	Cougartron acid resistant gloves - 1 pair
WELC2868	Cougartron safety glasses



“CGT-N5 is a game-changer in our electro-chemical weld cleaning and electropolishing processes. It’s mineral acid base ensures effective neutralization, crucial for safeguarding stainless steel surfaces, we recommend to all welders.”





# SURFACE TREATMENT

**PICKLE'NCLEAN**

What is Pickle'N'Clean	56
How to purchase	57

**WIPE'N'WELD**

How to purchase	59
-----------------	----

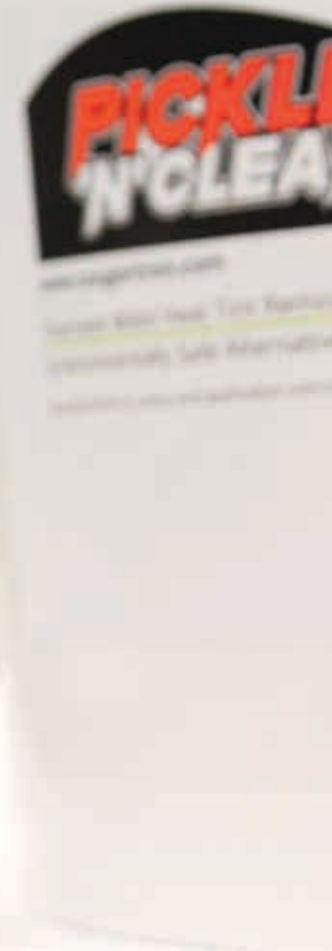
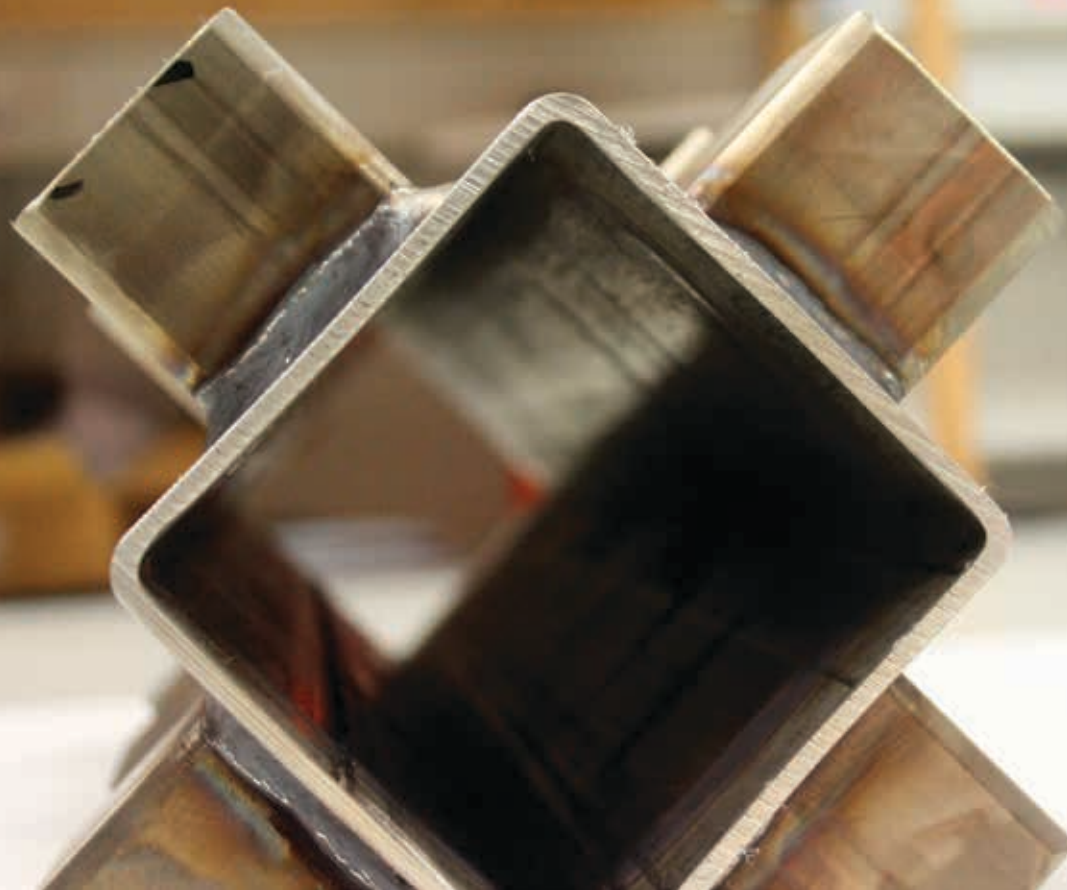
**CLEAN'N'PROTECT**

How to purchase	61
-----------------	----

Surface treatment products such as pre-weld wipes, passivation sprays, and after-sprays play a pivotal role in achieving pristine stainless steel surfaces throughout the welding process – from preparation to weld maintenance. While wipes are designed to remove oil, grease, and other contaminants before welding, our other products such as Pickle 'N' Clean provide a powerful remedy against all forms of weld contamination post-fabrication, restoring the aesthetic appearance and health of your welds.

Additionally, you can use our convenient after-sprays as a final touch, ensuring that your welds and surfaces stay clean and protected. Clean 'N' Protect not only removes fingerprints and rust residue, but it also creates a protective film, enhancing the aesthetics and strength of your finished pieces.





## Pickle'N'Clean

### A safe alternative to traditional Pickling Paste

For all professional welders, workplace safety is always a top priority. This is one of the reasons why we have developed a safe alternative to chemical pickling paste! This high-performance spray and paste can be applied to all grades of stainless steel, successfully removing heat tint discoloration and free iron contamination. It does not contain the harmful hydrofluoric acid, creating an instant positive impact on your process safety. Hydrofluoric acid is widely recognized as extremely poisonous, even fatal when exposed to for longer periods of time. On the other hand, Pickle 'N' Clean is non-toxic, non-poisonous, water-based, and fully biodegradable. It is not only safe but also as effective as traditional, dangerous methods. You can easily apply it to the surface with the help of a brush or a sprayer. Our team has thoroughly tested the product, and we can say without a shred of doubt that it is a real game-changer in the industry.



“This product not only delivers exceptional results but Also prioritizes safety—a crucial factor in my line of work.”

Scan the code to see the full video:

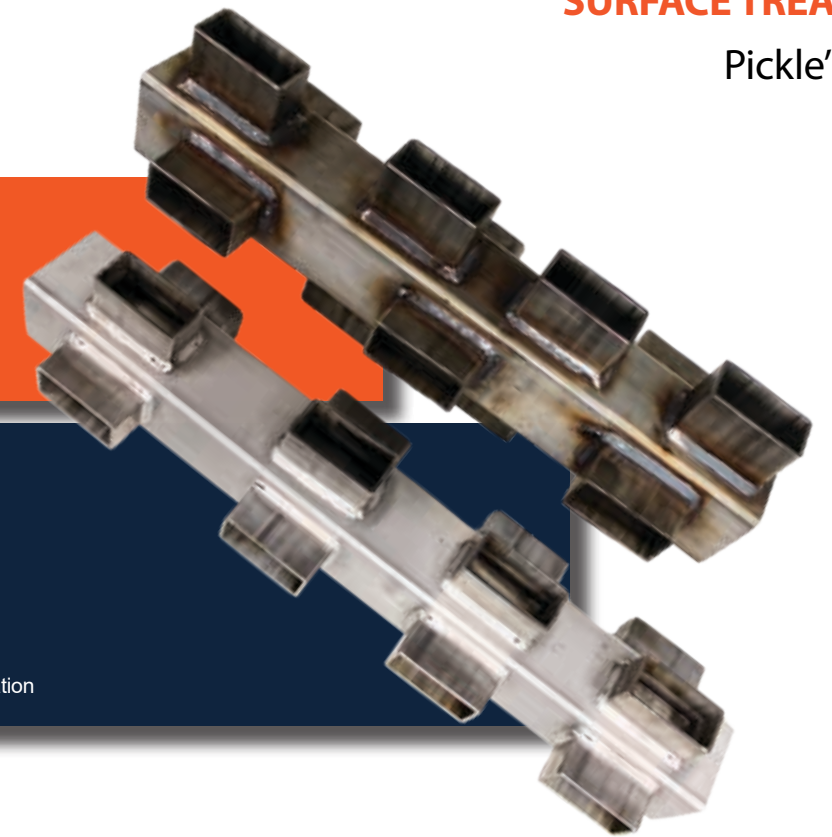


#### PICKLING PASTE

- Serious Safety Risks
- The process is overly complicated
- Its expensive and inefficient
- Re-passivation isn't guaranteed
- Contains Hydrofluoric Acid

#### PICKLE'N'CLEAN

- It's eco-friendly and safe to use
- The process is fast and easy
- The pricequality is fair
- Free of Hydrofluoric Acid
- Fully biodegradable
- Non toxic, non poisonous
- Removes heat tint and free iron contamination



#### Benefits of Pickle'N'Clean:

- High-performance, 2-in-1 pickling and passivation – on all grades of stainless steel.
- Removes heat tint discoloration & free-iron contamination.
- Free of Hydrofluoric acid (HF)!
- Water-based & fully-biodegradable.
- Non-toxic, non-poisonous, non-hazardous.
- No VOC's, no HAPS, no TAPS.
- As effective as traditional, dangerous methods.
- Easy to spread for application on surfaces.

#### Experience the Pickle'N'Clean process

#### - A seamless journey towards impeccable welds and enhanced safety.

Begin by degreasing the weld using the CGT-N5 neutralizing fluid, readily available through our website. Once prepped, apply the Pickle 'N' Clean thoroughly. After applying the spray or paste, allow 60-90 minutes for optimal results. Once the time has passed, clean your weld with a high-pressure water gun. That's it!

#### Buying information

Part nr.	Item	Quantity per pallet	Weight per pallet
PICK3035	Pickle 'N' Clean Liquid - 19L	16x	416 kg
PICK3038	Pickle 'N' Clean Liquid - 2L	396x	950 kg (12 per carton box)
PICK3039	Pickle 'N' Clean Liquid - 1L	800x	960 kg (25 per carton box)

Important: The price indication on the website is per piece.



## Wipe 'N' Weld

Heavy-duty industrial cleaning wipes for effective removal of oil, grease, and other types of surface contamination before welding. Wipe'N'Weld wipes are durable, anti-static, fast-drying, and leave surfaces fully dry and grease-free. Applicable on all types of metal, particularly effective on stainless steel.

### Wipe'N'Weld will remove:

- Oil and grease
- Water-based paint
- Permanent marker
- Dirt and grime
- Fingerprints

### Application:

Preparation before welding is key to a great looking and structurally sound weld. Clean the surface (joint) that is about to be welded with the Cougartron Wipe'N'Weld.

TIP: You can also clean your welding filler rods with the Wipe'N'Weld wipes before welding.

### Buying information

Part nr.	Item	Weight
CW0001	Wipe 'N'Weld - Pre weld Wipe - 1 tub	0.6 kg
CW0002	Wipe'N'Weld - Pre weld Wipe - 1 box (6 tubs)	3.6 kg

Sold as: 1 tube (75 wipes) or box of 6 tubes (450 wipes)



For effective removal of oil, grease and other forms of surface contamination before welding!



## Clean'N'Protect

Clean'N'Protect - Stainless Care - offers a convenient solution for cleaning and maintaining various surfaces. This ready-to-use emulsion, formulated with water as its base, effectively removes dust, fingerprints, oil, light limescale, and flash rust residues. It is suitable for both matte and polished stainless steel, aluminum, chrome, non-ferrous metal, glass, plastic, and wood.

Once applied and dried on the surface, the product leaves a touch-proof, shiny protective film, ensuring lasting cleanliness. Importantly, printed or etched inscriptions, such as those found on kitchen appliances and lifts, remain unaffected.

### Key features:

- Leaves a smooth protective film.
- Safe to use.
- Quick drying spray.
- Long-lasting protection.
- Enhanced appearance

### Buying information

Part nr.	Item	Weight	Pcs/Carton	Ctns/Pallet
WELC3256	Clean'N'Protect Stainless Care	0.5 kg	25	32







# METAL MARKING

## MARKING MACHINES

MK12	64
MK612	68

## ETCHING STENCILS

Custom Stencils	68
-----------------	----

## ETCHING STENCILS & PRINTERS

Printers 18-24 mm	70
Printers 18-36 mm	72
Printers 106 mm	73

## MARKING SETS & FLUIDS

Marketing Sets	74
Fluids	75

In today's industrial production, marking metal tools, machines, and components is a crucial process.

Our marking range includes specialized machines, custom stencils, fluids, printers, and other solutions for effortless marking and etching on various types of metal surfaces.

Electrolytic marking stands out due to its simplicity, flexibility, and the exceptional results it delivers, making it a preferred choice in an increasing number of industries and metal workshops. Thanks to the safety benefits associated with this process, its application in the pharmaceutical and food sectors is on the rise.

Additionally, we offer specialized sets with printers tailored to various industrial applications. Upgrade your process today and unlock the full potential of modern marking technology.



Portable and user-friendly electrochemical marking machine for marking and etching on various types of metal surfaces including stainless steel, mild steel, aluminum, brass, copper, zinc, nickel, and titanium. Ideal for marking logos, serial numbers, product names, QR codes, and other relevant production-related information.

- ✔ Are you etching stainless steel?
- ✔ Is your current method too slow?
- ✔ Are you looking for more consistent marking?

We have a solution for you – the Cougartron MK12!

**Key features:**

- Simple, easy-to-use control panel.
- Robust & industrial construction.
- Marking fluids available for a wide range of metal surface types.
- Choose between white felt (a more economic option) or black felt (for a faster process and deeper colour).
- Choose between a custom stencil (produced by Cougartron in your design) or one of our smart stencil-printers (make your own stencils).
- Supplied in a compact carry case.



**Technical data**

Power supply - 110V version	110 V AC, 50/60Hz, 1A
Power supply - 230V version	240 V AC, 50/60Hz, 1A
Output Amps	<10A
Output voltage	12 V AC
DC adaptor compatible	Yes
Input Cable length	1.5m
Output Cable length	1.5m
Marking head options	40mm

The MK12 system is quick, safe, and easily operated. This portable metal marking machine is delivered in a smart carry case so you can keep all items together – practical to use off- and on-site.

**NOTE:** The MK12 machine is delivered in a starter kit that also contains accessories and fluids for electrolytic marking (see the content of the starter kit below).

**Please remember:**

Stencils and label printers are not included in the set (but sold separately).

**Set buying information**

Description	Weight	110V	230V
MK12 marking machine - Basic Set	2,41 kg	WELC4229	WELC4027
MK12 marking machine - Starter Set A	2,41 kg	WELC4951	WELC4950
MK12 marking machine - Starter Set B	6,4 kg	WELC4953	WELC4952
MK12 marking machine - Starter Set C	8,0 kg	WELC4955	WELC4954

**Set contents**

Part nr.	Description	Basic Set	Starter Set A	Starter Set B	Starter Set C
n/a	Cougartron MK12 machine	x	x	x	x
n/a	Carry Case	x	x	x	x
WELC4031	MK marking cable set (2pcs generic cable)	x	x	x	x
WELC4028	MK marking handle for handstamp	x	x	x	x
WELC4029	Marking block without adaptor	x	x	x	x
WELC4002	O-ring for std marking block (5 pc)	x	x	x	x
WELC4030	MK marking clamp	x	x	x	x
n/a	White felt 75x40x3mm (4 pcs)	x	x	x	x
n/a	Yellow fabric 75x40mm (4 pcs)	x	x	x	x
n/a	CGT-S1 Marking Fluid - 100ml	x	x	x	x
n/a	CGT-N5 HyPerformance Neutralising Fluid - 100ml	x	x	x	x
n/a	Container for marking fluids	x	x	x	x
STEN1029	Custom stencil voucher - max size 150x100mm		x	x	x
WELC4946	Stencil Printer - Brother PT-D610BTV-18-24mm tape			x	
WELC4015	Stencil tape, 24mm x 3m			x	
WELC4942	Stencil Printer - Brother TD-4410D - 106mm tape				x
WELC4021	106mm x 100m Marking Roll				x
WELC4079	DC adaptor for light etching				x

**Additional spares**

Part nr.	Description
WELC3115	CGT-S1 Marking Fluid - 500ml*
WELC3165	CGT-N5 HyPerformance Neutralising Fluid - 500ml
CW0001	WIPE'N'WELD - Pre weld Wipe - 1 tub**
WELC4033	White felt 75x40x3mm (10 pcs)
WELC4025	Carbon felt 75x40x4,6mm (10 pcs)
WELC4026	Yellow fabric 75x40mm (10 pcs)

\*See our full range of marking fluids for marking other metal types

\*\* Suitable for degreasing surfaces prior to marking

MK612 is a portable electrochemical metal marking machine equipped with a variable voltage technology (6-12V). Effective **metal marking machine** with a variable voltage technology. Create larger markings on various types of metal surfaces without losing color consistency. Ideal for logos, maker's marks, part numbers, QR codes and more. MK612 comes delivered in a practical carrying case.

By lowering the voltage from 12 to 6V, you will be able to mark larger metal surfaces – without losing color consistency. All your markings will have a uniform dark appearance, no matter their size.

**The machine offers fast, safe, and permanent marking of:**

- ✓ Logos
- ✓ QR codes, bar codes
- ✓ Serial numbers
- ✓ Part names and codes
- ✓ Maker's marks

**Key features:**

- Variable voltage for enhanced control – especially useful for stencils with large areas of solid colour (>10mm wide).
- Robust & industrial construction.
- Marking fluids available for a wide range of metal surface types.
- Choose between white felt (a more economic option) or black felt (for a faster process and improved colour consistency).
- Choose between a custom stencil (produced by Cougartron 'according to your design) or one of our smart stencil-printers (make your own stencils).
- Supplied in a compact carry case.



Technical data	
Power supply - 110V version	110 V AC, 50/60Hz, 1A
Power supply - 230V version	240 V AC, 50/60Hz, 1A
Output Amps	<15A
Output voltage	6-12 V AC
DC adaptor compatible	Yes
Input Cable length	1.5m
Output Cable length	1.5m
Marking head options	40mm

**Set buying information**

Description	Weight	110V	230V
MK612 marking machine - Basic Set	2,41 kg	WELC4930	WELC4024
MK612 marking machine - Starter Set A	2,41 kg	WELC4961	WELC4960
MK612 marking machine - Starter Set B	6,41 kg	WELC4963	WELC4962
MK612 marking machine - Starter Set C	8,0 kg	WELC4965	WELC4964

**Set contents**

Part nr.	Description	Basic Set	Starter Set A	Starter Set B	Starter Set C
n/a	Cougartron MK612 machine	x	x	x	x
n/a	Carry Case	x	x	x	x
WELC4031	MK marking cable set (2pcs generic cable)	x	x	x	x
WELC4028	MK marking handle for handstamp	x	x	x	x
WELC4029	Marking block without adaptor	x	x	x	x
n/a	O-ring for std marking block (1 pc)	x	x	x	x
WELC4030	MK marking clamp	x	x	x	x
n/a	White felt 75x40x3mm (4 pcs)	x	x	x	x
n/a	Yellow fabric 75x40mm (4 pcs)	x	x	x	x
n/a	CGT-S1 Marking Fluid - 100ml	x	x	x	x
n/a	CGT-N5 HyPerformance Neutralising Fluid - 100ml	x	x	x	x
n/a	Container for marking fluids	x	x	x	x
STEN1029	Custom stencil voucher - max size 150x100mm		x	x	x
WELC4946	Stencil Printer - Brother PT-D610BTV-18-24mm tape			x	
WELC4015	Stencil tape, 24mm x 3m			x	
WELC4942	Stencil Printer - Brother TD-4410D - 106mm tape				x
WELC4021	106mm x 100m Marking Roll				x
WELC4079	DC adaptor for light etching				x

**Additional spares**

Part nr.	Description
WELC3115	CGT-S1 Marking Fluid - 500ml*
WELC3165	CGT-N5 HyPerformance Neutralising Fluid - 500ml
CW0001	WIPE'N'WELD - Pre weld Wipe - 1 tub**
WELC4033	White felt 75x40x3mm (10 pcs)
WELC4025	Carbon felt 75x40x4,6mm (10 pcs)
WELC4026	Yellow fabric 75x40mm (10 pcs)
WELC4002	O-ring for std marking block (pack5)

\*See our full range of marking fluids for marking other metal types  
 \*\* Suitable for degreasing surfaces prior to marking





Quality and durable nylon stencils for marking hundreds of metal parts with your design. Custom-made by Cougartron according to your specifications. Usable up to 2000 times! All in high-resolution.

## Order your logo or design

Our stencil design & production service means that you can achieve smart, high-resolution marking results every time.



**1 SELECT YOUR ARTWORK**

For logos or graphics, please provide a high-resolution print-ready version. If it's text, please supply the content along with the font specifications for us to use.

**2 SELECT SIZE**

Please provide the maximum dimensions (height, width) of your logo or graphics, indicating the size of the object that will be marked on your metal surface. Note that the quoted price relates to the entire stencil size, which includes at least 5mm of padding and a 10mm border.

**3 QUOTATION OF ARTWORK**

You will receive a detailed quotation within 24 hours. Upon receiving your approval, we will immediately start preparing your stencil.

**4 APPROVE DESIGN**

Upon approving the design and placing your order, you can expect to receive the finished product within 1-2 weeks.



We combine quality Brother printers with our stencil tapes to offer you an extra dose of flexibility during your marking and etching process. Prepare disposable stencils quickly and easily—how you want it, when you want it. While the printers are best suited for text, several models can be connected to your computer or phone to provide additional design capabilities.



Part nr.	Item
WELC4946	Stencil Printer - Brother PT-D610BTV-18-24mm tape



Practical printer best used for the production of single-use stencils for electrochemical marking and etching. Max stencil size – 24mm.

Part nr.	Item
WELC4284	Stencil Printer - Brother PT-E550WVP-18-24mm tape



PT-E550WVP is a compact label printer for production of stencils for electrolytic marking & etching process. The printer is equipped with an automatic cutter and can be connected to your PC or smart devices.

Part nr.	Item
WELC4014	Stencil tape, 18mm x 3m
WELC4015	Stencil tape, 24mm x 3m
WELC4016	Stencil tape, 36mm x 3m (can only be used on the WELC4339)



Stencil tapes to fit Brother printers for single use stencil production for electrolytic metal marking and etching. See page 72 for more images. Remember that you can only use the stencils 18-24mm for the WELC4946 and WELC4284.

**Technical data**

	WELC4946	WELC4284
Weight	1kg	1,05 kg
Dimensions	202mm (W) x 199mm (H) x 87mm (D)	126 (W) x 250 (D) x 94 mm (H)
Print speed	30mm/sec	30mm/sec
Function	Stencil/label printing	Stencil/label printing
Brand & Model:	Brother PT-D610BTV	Brother PT-E550WVP
Width of printed stencils	18mm, 24mm	18mm, 24mm
Carry case	Yes	Yes
Handheld/Portable	Yes	Yes
Display size	20 characters x 2 lines	
Backlit	Yes	Yes
Cutter	Automatic	Full and half, Auto
Keys	65	
Battery	AA X 6pcs (LR6, Ni-MH)	AA X 6pcs (LR03, HR03)
PC-connectivity	Yes	Yes
USB-connectivity	Yes	Yes
Bluetooth-connectivity	Yes	No
Connectivity to smart devices	Yes	No
Available fonts	17	14
Available symbols	900	384

METAL MARKING



“We’re really pleased with our printer from Cougartron. Their quick advice and fast delivery have been great!”



## Etching Stencils and printers

Use the 18-36mm tape to print stencils containing larger fonts and letters. These quality printers from Brother are combined with Cougartron's own stencil tapes to bring to you the flexibility of being able to make the stencil you want, when you want it.

Part nr.	Item
WELC4339	Stencil Printer - Brother PT-D800W - 18-36mm tape



Reliable label printer for producing stencils for electrochemical marking and etching. The printer produces single-use stencils up to 36mm wide and is equipped with a convenient laptop-style keyboard.

### Recommended Accessories

Part nr.	Item
WELC3115	CGT -S1 Stainless Steel Marking Fluid - 500ml
WELC2404	Transport Bag

Part nr.	Description
WELC4016	Stencil tape, 36mm x 3m

Stencil tapes to fit Brother printers for single use stencil production for electrolytic metal marking and etching.

### Technical data

Weight	5,307 kg
Dimensions	337mm (W) x 188mm (D) x 173mm (H)
Print speed	58mm/sec
Function	Stencil/label printing
Brand & Model	Brother PT-800W
Width of printed stencils	18-36mm
Carrying case	No – Contains a practical handle for carrying
Handheld/Portable	Stationary use
Keyboard	QWERTY
Backlit	Yes
Cutter	Automatic
Battery	Optional Li-ion battery Pack (PA-BT-4000LI), Optional Battery base (PA-BB-0003)
Material	Plastic
PC-Connectivity	Yes
USB-Connectivity	Yes
Connectivity to smart devices	No
Touchscreen	No
Available fonts	14
Available symbols	465
Stencil tape	TZe Tape



Our wide-format printers provide a huge variety of printing possibilities. With the ability to print stencils up to 100mm wide, you can handle large-scale projects with ease. This range is particularly useful for producing stencils for machine type plates, logos, icons, larger lettering, and much more.



Part nr.	Item
WELC4942	Stencil Printer - Brother TD-4410D - 106mm tape
WELC4938	Stencil Printer - Brother TD-4520DN - 106mm tape
WELC4021	106mm x 100m Marking Roll

An easy-to-use stencil printer for electrochemical marking and etching.

### Technical data

	WELC4942	WELC4938
Brand/Model	Brother TD-4410	Brother TD-4520
Weight	2,4 kg	2,4 kg
Width of printed stencils	Up to 106mm	Up to 106mm
Cutter	Automatic	Automatic
Print speed	Up to 127 mm/sec	Up to 127 mm/sec
PC connectivity	Yes	Yes
Ethernet connectivity	No	Yes
Print resolution	203dpi	300dpi

## Marking Sets

Equip your Cougartron weld cleaner with a compatible Marking set, unlocking its full potential to effortlessly mark and etch metal surfaces.

Choose between our Standard and Advanced sets, or construct a customized set tailored to your project needs by combining different items. If you have any questions or need assistance, please don't hesitate to reach out to us at any time.



### Set buying information

Part nr.	Item	Weight
WELC4045	Marking set for weld-cleaning machine (Standard)	3,18 kg
WELC4956	Marking set for weld-cleaning machine (Advanced)	5.34 kg



Cougartron Basic Etching Set transforms your Cougartron weld cleaning machine into a powerful marking system for stainless steel and other metal surfaces. The Basic Etching Set is compatible with all Cougartron weld cleaners.

### Set contents

Part nr.	Description	Standard Set	Advanced Set
WELC3115	CGT-S1 Marking Fluid - 500ml	x	x
WELC3165	CGT-N5 HyPerformance Neutralising Fluid - 500ml	x	x
WELC4040	Marking block with adaptor	x	x
WELC4033	White felt 75x40x3mm (10 pcs)	x	x
WELC4026	Yellow fabric 75x40mm (10 pcs)	x	x
WELC4013	Masking tape for marking - 24mm x 50m	x	x
WELC4002	O-ring for std marking block (pack5)	x	x
WELC2211	Transport case - Small	x	
WELC5012	Foam insert for small transport case (WELC2211)	x	
WELC2063	Transport case - Medium		x
WELC5013	Foam insert for medium transport case (WELC2063)		x
STEN1029	Custom stencil voucher - max size 150x100mm		x
WELC4946	Stencil Printer - Brother PT-D610BTV-18-24mm tape		x
WELC4015	Stencil tape, 24mm x 3m (2pcs)*		x

\*Re-order code for 1pc: WELC4015

\*\*Example image only. See set contents in table below.

## Marking Fluids

Cougartron marking fluids are available in a wide range of formulas, each suited to a particular metal type. These quality fluids ensure that your marking results are consistent and durable.

Part nr.	Item
WELC3115	CGT-S1 Marking fluid for stainless steel
WELC3116	CGT-AL Marking fluid for aluminum
WELC3117	CGT-MS Marking fluid for mild steel and carbon steel
WELC3118	CGT-BR Marking fluid for brass
WELC3133	CGT-TI Marking fluid for titanium
WELC3150	CGT-NC Marking fluid for nickel
WELC3159	CGT-SA Marking & etching fluid for stainless steel and aluminium



METAL MARKING

"We have been marking our logo on stainless steel products for years now and the logo never fades! This is quality."



# PIPE TOOLS

## SILICONE PURGE PLUGS

Product Features	78
Buying information	79

## DUAL SEAL PURGE SYSTEM

Product Features	80
Buying information	81
Individual Parts	82
One Size sets	84

## PIPE CLAMPS

Pipe Clamps	86
Buying Information	87

## PIPE STANDS & ACCESSORIES

Pipe Stands	88
Roller Accessories	89

Are you in need of pipe purging solutions? Look no further! We've got all the equipment you need for a hassle-free purging process.

In our Pipe Tools range, you'll find the Purge Plugs and the popular Dual Seal System. These specialized plugs are designed to effortlessly purge your pipes, ensuring optimal welding.

For joining two pipes seamlessly, we offer a variety of clamps and stands designed for different applications. Additionally, to enhance ease of use, consider our roller accessories, which can be easily added onto your stand for an even smoother experience.

Streamline your pipe work process with our comprehensive range of high-quality tools and accessories.

# Silicone Purge Plugs

Purge 'N'Weld Purge plugs offer the perfect solution for all your high-purity back purging applications. Constructed from heat-resistant silicone, these plugs can be used in close proximity to the Heat Affected Zone (HAZ).

They enable you to use less Argon, drastically increase your purge process speed, and achieve a higher return on investment by optimizing direct labor and overhead recovery costs.

The kit contains 6 pairs of plugs, gas diffuser, purging tube and quick release fitting for instant purge line connection.



## Set buying information

Part nr.	Description	Weight
CP3000	Purge 'N'Weld - Silicone Purge Plugs Set - 23-103mm	2,5 kg

## Set contents

Part nr.	Description
CP2002	Purge Plugs - 23-27mm
CP2004	Purge Plugs- 31-39mm
CP2005	Purge Plugs - 45-53mm
CP2006	Purge Plugs - 54-64mm
CP2007	Purge Plugs - 73-76mm
CP2008	Purge Plugs - 83-103mm
CP2009	Gas diffuser for silicone bung system
CP2019	PVC hose - 2m
CP2020	Hose clip for silicone bung system
CP2021	6mm Tube Connector

"Purge Plugs from Cougartron have transformed our high purity welding. Their high heat silicone construction allows for close proximity to the heat affected zone, reducing Argon usage and purge times. Thanks Partner!"

### Key features:

- Purge 'N'Weld Plugs create a flawless seal, ensuring a clean welding environment.
- Maintaining a pristine environment results in stronger, reliable welds.
- High-quality sealing streamlines the cleaning process, saving time.
- Premium silicone construction withstands high temperatures for durability.
- Each set includes a diffuser for consistent, high-quality welds.
- Six pairs of bungs cater to various pipe diameters, suitable for diverse welding projects.
- Includes bungs, diffusers, quick-release coupler, and purging tube for a successful welding experience.
- Packaged in a durable Cougartron orange case for easy portability and organized storage.





# Dual Seal Purge System

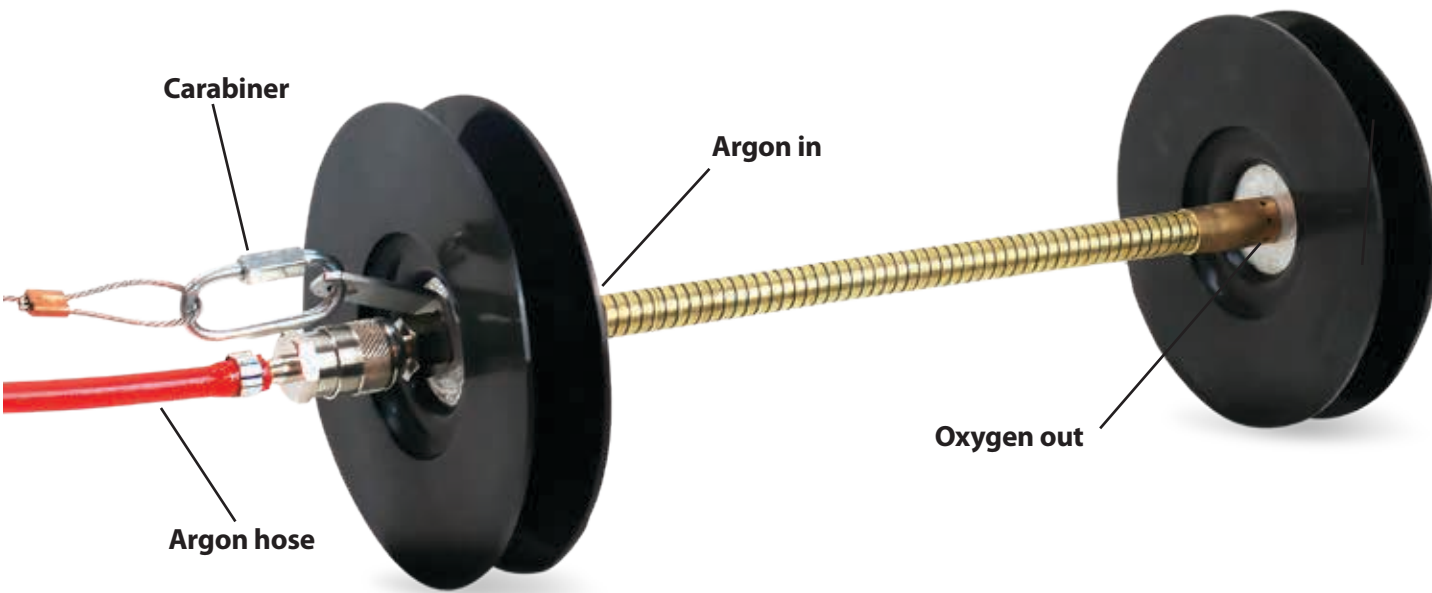
The Cougartron Dual Seal System is your go-to solution for purging when welding stainless steel pipes and tubes. This system is engineered to withstand the demands of the welding environment while providing exceptional usability. The Dual Seal Flanges are manufactured from high-grade silicone, ensuring heat resistance up to 320°C, making it suitable for welding not only stainless steel but also Duplex and other exotic materials.

Whether you're dealing with straight pipe sections or bends, the Dual Seal System is easy to pull through, ensuring a tight seal and reducing both purging time and inert gas usage. Experience typical purge times of less than 2 minutes. For instance, an 8" (200mm) pipe can be purged to below 0.01% oxygen in less than 2 minutes.

The Dual Seal System is available to suit internal pipe diameters ranging from 25mm to 215mm, offering flexibility for various welding projects. We have three different Dual Seal purge unit lengths: 120mm, 150mm, and 200mm available, all compatible with a range of sealing discs. For simplicity, opt for one-size sets that include a ready-to-use Dual Seal Unit with a single disc size, complete with two discs, one spacer, and other necessary accessories. If you only need the discs these can be purchased separately.

### Key features:

- Robust and Flexible.
- Heat-Resistant.
- Rapid Purging.
- Size Variety.
- Multiple Length.
- Comprehensive Sets.
- Spare Discs.



### Set buying information

Description	Weight	Code
Purge 'N' Weld - Dual Seal Purge Set - 25-100mm	4,24 kg	CP3001
Purge 'N' Weld - Dual Seal Purge Set - 25-165mm	7,04 kg	CP3002
Purge 'N' Weld - Dual Seal Purge Set - 25-215mm	13,98 kg	CP3003

### Set contents

Part nr.	Description	25-100mm	25-165mm	25-215mm
WELC2063	Cougartron Transport case - Medium	1		
WELC2064	Cougartron Transport case - Large		1	2
CP2013	Foam insert for Dual Seal Set 25-100mm	1		
CP2014	Foam insert for Dual Seal Set 25-165mm		1	1
CP2042	Foam insert for Dual Seal Set 25-215mm			1
CP2023	Gas tube reinforced Ø5.5/8mm - 10m	1	1	1
CP2041	Towing wire with 30mm loops, stainless - 10m	1	1	1
CP2043	Quick-connect coupling - male	1	1	1
CP2044	Quick-connect coupling - female	1	1	1
CP2045	Gas damper	1	1	1
CP2046	Quicklink carabiner - 40mm	1	1	1
CP2047	Hose clip	1	1	1
CP2048	Towing bracket	1	1	1
CP2018	Flex Spacer - 200mm	1	1	1
CP2024	Dual Seal Purge Disc 25-31mm	2	2	2
CP2025	Dual Seal Purge Disc 32-40mm	2	2	2
CP2026	Dual Seal Purge Disc 41-50mm	2	2	2
CP2027	Dual Seal Purge Disc 52-61mm	2	2	2
CP2028	Dual Seal Purge Disc 62-74mm	2	2	2
CP2029	Dual Seal Purge Disc 75-86mm	2	2	2
CP2030	Dual Seal Purge Disc 85-100mm	2	2	2
CP2031	Dual Seal Purge Disc 100-110mm		2	2
CP2032	Dual Seal Purge Disc 120-135mm		2	2
CP2033	Dual Seal Purge Disc 140-155mm		2	2
CP2034	Dual Seal Purge Disc 150-165mm		2	2
CP2035	Dual Seal Purge Disc 180-200mm			2
CP2036	Dual Seal Purge Disc 195-215mm			2

**Set contents (basic accessories).**

Part nr.	Description
CP2023	Gas tube reinforced Ø5.5/8mm - 10m
CP2041	Towing wire with 30mm loops, stainless - 10m
CP2043	Quick-connect coupling - male
CP2044	Quick-connect coupling - female
CP2045	Gas damper
CP2046	Quicklink carabiner - 40mm
CP2047	Hose clip
CP2048	Towing bracket
CP2016	Flex Spacer - 120mm
CP2017	Flex Spacer - 150mm
CP2018	Flex Spacer - 200mm

Part nr.	Description
CP2024	Dual Seal Purge Disc 25-31mm
CP2025	Dual Seal Purge Disc 32-40mm
CP2026	Dual Seal Purge Disc 41-50mm
CP2027	Dual Seal Purge Disc 52-61mm
CP2028	Dual Seal Purge Disc 62-74mm
CP2029	Dual Seal Purge Disc 75-86mm
CP2030	Dual Seal Purge Disc 85-100mm
CP2031	Dual Seal Purge Disc 100-110mm
CP2032	Dual Seal Purge Disc 120-135mm
CP2033	Dual Seal Purge Disc 140-155mm
CP2034	Dual Seal Purge Disc 150-165mm
CP2035	Dual Seal Purge Disc 180-200mm
CP2036	Dual Seal Purge Disc 195-215mm
CP2037	Dual Seal Purge Disc 235-260mm
CP2038	Dual Seal Purge Disc 255-280mm
CP2039	Dual Seal Purge Disc 275-300mm
CP2040	Dual Seal Purge Disc 290-320mm



CP2023



CP2041



CP2045

CP2043



CP2043



CP2046

CP2047



CP2018



CP2048



CP2024

CP2025

CP2026

CP2027

CP2028



CP2028

CP2029

CP2030

CP2031



CP2032

CP2033

CP2034

CP2035



CP2036

CP2037

CP2038



CP2039

CP2040



## One-Size Sets

The Dual-Seal Purge One-Size sets are your ideal choice for stainless steel pipe purging. They come with all the essential accessories, along with the option to select two purge discs of your choice.

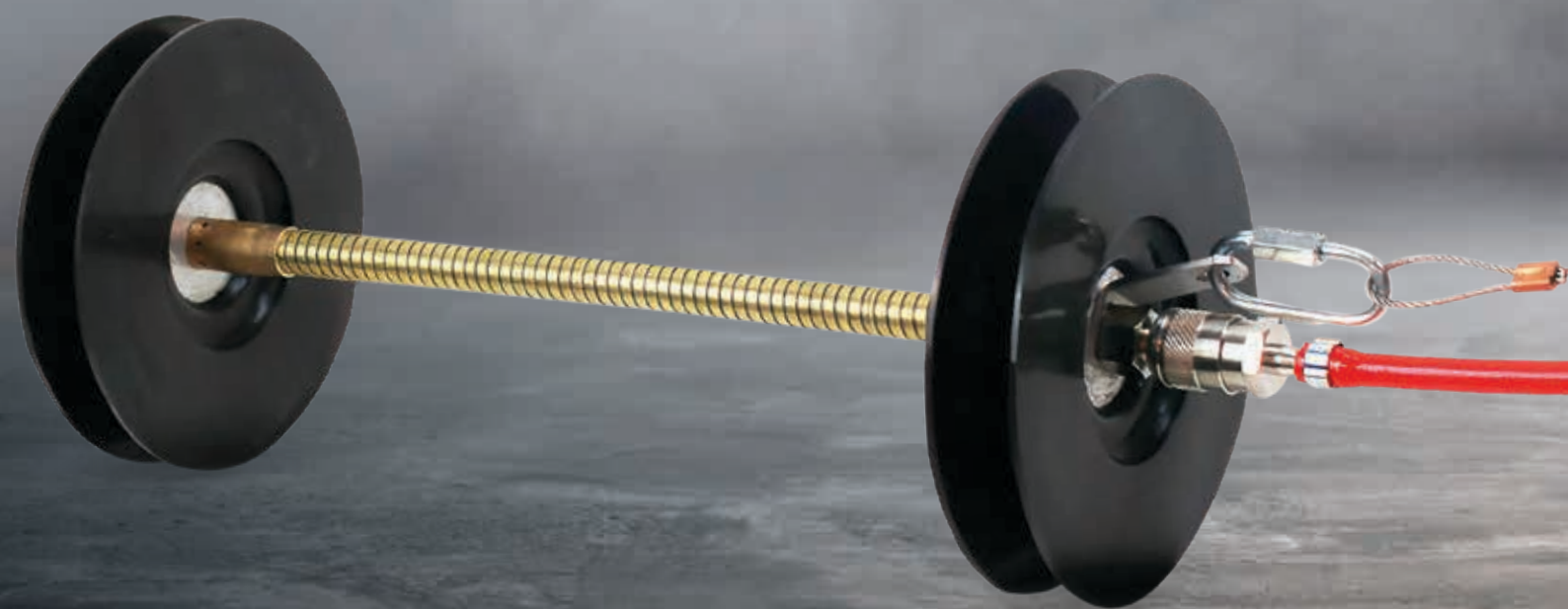
### Set contents (basic accessories)

Part nr.	Item	One size set
CP2023	Gas tube reinforced Ø5.5/8mm - 10m	1
CP2041	Towing wire with 30mm loops, stainless - 10m	1
CP2043	Quick-connect coupling - male	1
CP2044	Quick-connect coupling - female	1
CP2045	Gas damper	1
CP2046	Quicklink carabiner - 40mm	1
CP2047	Hose clip	1
CP2048	Towing bracket	1
CP2016	Flex Spacer - 120mm	
CP2017	Flex Spacer - 150mm	
CP2018	Flex Spacer - 200mm	1
n/a	Cardboard box	1

**Description Disc sizes\*** When buying the one size set you will always get 2 discs of choice in the selected set. The one-size set will be delivered in a cardboard box.

### Set buying information

Part nr.	Item
CP2051	Dual Seal Purge - One-size Set - Disc 25-31mm
CP2052	Dual Seal Purge - One-size Set - Disc 32-40mm
CP2053	Dual Seal Purge - One-size Set - Disc 41-50mm
CP2054	Dual Seal Purge - One-size Set - Disc 52-61mm
CP2055	Dual Seal Purge - One-size Set - Disc 62-74mm
CP2056	Dual Seal Purge - One-size Set - Disc 75-86mm
CP2057	Dual Seal Purge - One-size Set - Disc 85-100mm
CP2058	Dual Seal Purge - One-size Set - Disc 100-110mm
CP2059	Dual Seal Purge - One-size Set - Disc 120-135mm
CP2060	Dual Seal Purge - One-size Set - Disc 140-155mm
CP2061	Dual Seal Purge - One-size Set - Disc 150-165mm
CP2062	Dual Seal Purge - One-size Set - Disc 180-200mm
CP2063	Dual Seal Purge - One-size Set - Disc 195-215mm
CP2065	Dual Seal Purge - One-size Set - Disc 235-260mm
CP2066	Dual Seal Purge - One-size Set - Disc 255-280mm
CP2067	Dual Seal Purge - One-size Set - Disc 275-300mm
CP2068	Dual Seal Purge - One-size Set - Disc 290-320mm







## Pipe Clamps

Experience the innovation of Clamp 'N' Weld, a revolutionary clamping tool designed to ensure even distribution of clamping forces around the target pipe during welding. This unique design guarantees consistent clamping performance, thanks to the precisely equal spacing between clamping points. Whether you're working with pipes ranging from 1 to 14 inches in diameter, Clamp 'N' Weld delivers unparalleled reliability.

Featuring adjustable screws with stainless steel balls at their ends, Clamp 'N' Weld eliminates the risk of scratching the objects you're welding, while also preventing corrosion. You can trust in the durability and longevity of your welding materials.

The arms of Clamp 'N' Weld are crafted from lightweight yet robust aluminum, enabling them to provide the necessary clamping force for a wide range of pipe dimensions. With compatibility for pipes ranging from 27 to 355 mm and wall thicknesses of up to 15 mm, you can tackle any welding job with confidence.

But that's not all – Clamp 'N' Weld is versatile and suitable for welding a variety of materials, including carbon steel, stainless steel, duplex, super duplex, and titanium. Whatever your welding project demands, you can count on Clamp 'N' Weld to deliver exceptional performance.

Invest in Clamp 'N' Weld and experience the future of precise, uniform clamping in welding – your gateway to flawless welds on a wide range of materials.

### Set buying information

Part nr.	Description	Range	Weight
CW2003	Clamp 'N' Weld Fitting clamp 1-3"	27 - 64 mm	0,75 kg
CW2004	Clamp 'N' Weld Fitting clamp 2-6"	60 - 168 mm	2,60 kg
CW2005	Clamp 'N' Weld Fitting clamp 6-14"	168 - 355 mm	7,50 kg

Fitting clamp 1-3" 27 - 64 mm



Fitting clamp 2-6" 60 - 168 mm



Fitting clamp 6-14" 168-355 mm





## Pipe Stands

We have recently launched two types of pipe stands - fixed and foldable - both readily available on our website. These stands are conveniently delivered in parts to facilitate transport, promoting environmental sustainability, and can be effortlessly assembled in just five minutes.

Each package comprises the primary housing, a V-head, and a set of legs complete with nuts and bolts. Additionally, roller kits are readily available to accommodate any specific requests.

Both fixed and foldable legs are available for the stand. This folding feature ensures versatility, allowing you to use it for everyday tasks and conveniently store steel profiles and pipes after work. With a maximum capacity of 1500kg, these stands offer robust support for your materials.

### Set buying information

Part nr.	Item	Height	Length	Weight
CW1001	Fixed Pipe-stand	85 cm -125 cm	76 cm	11,5 kg
CW1000	Folding Pipe-stand	85 cm -125 cm	112cm	12,0 kg



### Set buying information

Part nr.	Item	Capacity	Pipe Size	Weight
CW2000	Ball transfer head (stainless steel)	925 kg	12 - 610 mm	1,8 kg

Ball transfer head (stainless steel) is ideal for use with threading machines, roll grooving, or other pipe working applications. Fits easily onto V Head Pipe Stands (CW1000 & CW1001).



Part nr.	Item	Capacity	Pipe Size	Weight
CW2001	Polyethylene roller head	450 kg	12 - 610 mm	1,1 kg

Designed to provide robust support for a wide range of materials, including general-purpose and stainless steel, ensuring the prevention of workpiece contamination. The Roller can be attached to the existing V head prongs and securely fastened in place with a locking screw. This versatile solution is ideal for both workshop and on-site applications, with a special emphasis on its suitability as a stand for precise pipe cutting using a circular saw.



Part nr.	Item	Capacity	Pipe Size	Weight
CW2002	Steel roller head	450 kg	10 - 610 mm	1,3 kg

Robust steel wheels that allow precise positioning adjustments of the pipe during cutting and welding operations (can be bought as a set as well). This versatile head is ideal for providing steadfast support to general-purpose materials. However, please note that it is not suitable for use with stainless steel, as contact with the steel wheels may risk material contamination. These plates seamlessly attach to the existing V head prongs and are securely fastened in place using a locking screw. This makes it an excellent choice for both workshop and on-site applications, making it particularly handy as a sturdy stand for cutting pipes with a circular saw.





# FUME EXTRACTION

## MOBILE & PORTABLE FILTER UNITS

Mobile Filter Units (Disposable)	92
Mobile Filter Units (Compressed air)	93
Portable Filter Units	94

## EXTRACTION ARMS

Extraction Arms	96
Point Extraction Fume arms	97
Filter Systems	100

## EXTRACTION TABLES, WALLS & HOODS

Extraction tables & systems	102
Extraction Cabinet	106
Education tables for Cutting & Welding	108

Are you struggling to manage dust, fume, or mist in your workplace? Look no further! We're your reliable partner in ensuring a clean and safe work environment.

Explore our extensive range of filter options, hoods, and walls, all meticulously tailored to meet your unique workplace needs.

But that's not all! We offer a variety of filter units and a wide array of extraction arms to suit your specific requirements. Whether you're dealing with rust, gas, or fume, we offer effective waste management solutions to enhance your workspace hygiene and safety.

Discover the difference our filtration solutions can make in your work environment. Contact us today to learn more and experience unparalleled quality and performance!



## COUGAIR 400 MOBILE FUME EXTRACTOR with Disposable Filter

### Applications:

- Suitable for filtering fine dust and fume occurred during welding processes.
- Suitable for processing unalloyed and low-alloy steel welding fume.
- Suitable for filtering low or medium levels of dust and fume.

### Key features:

- Highly mobile with 4 swivel wheels and robust rear handle.
- Flexible arm system gives long reach.
- Compact footprint.
- Filter indicator buttons indicate when filter change is necessary - minimising downtime for maintenance checks.
- Washable aluminium mesh pre filter functions as an effective spark trap.
- Phase sequence indicator prevents motor damage as a result of incorrect or missing phases.
- Incorrect fan rotation indicator prevents dangerous dust pollution.
- 3m Power cable.

### Buying information

Part nr.	Item
EXTR1016	Cougair 400 mobile extraction unit, 1x 3m arm
EXTR2005	Pre-filter set for Cougair 400 (10pcs).
EXTR2006	Main filter for Cougair 400



## COUGAIR 500 MOBILE FUME EXTRACTOR Compressed Air Cleaning

### Applications:

Cougair 500 is an efficient filter unit equipped with user-activated compressed-air cleaning. Tested by an internationally recognized institute according to welding smoke class W3.

The unit meets the safety and health requirements according to DIN EN ISO 15012-1. Bears therefore the granted approval mark. Unit intended for recirculation.

### Key features:

- Filter unit with user-activated compressed-air cleaning with inbuilt air tank.
- Energy-efficient fan design.
- Equipped with integrated motor protection switch.
- Delivered according to dust class M.
- Extraction arm has standard damper in hood.
- Equipped with spark arrest.
- Easy dust container access and emptying.

### Buying information

Part nr.	Item
EXTR1015	Cougair 500 mobile extraction unit, 1x 3m arm
EXTR2007	Filter for Cougair 500



**Extraction Arm**  
Is standard delivered with arm type Cougarm B.



**Motor protection and compressed-air**  
Equipped with integrated motor protection and compressed-air connection.



**Dust container**  
Easy service of dust container with sack.



**Outlet**  
Noise-damped outlet with diffused exhaust.

## Cougair 200 Portable Hi-Vac Unit

Cougair 200 is a portable suction unit for high-vacuum tasks. Very versatile portable high vacuum unit. It is used for grinding and welding tasks of shorter duration e.g. on-site. It has a low weight of 18kg and is delivered complete with cable and plug.

Brilliant for repair works and highly mobile applications. Delivered with cartridge filter according to dust class M.

### Key features:

- Compact portable design.
- For mobile welding/grinding tasks of shorter duration (e.g. repair work).
- Light weight for easy transport.
- Easy filter replacement.
- Forced motor cooling by external air.
- Delivered complete with cable and plug.
- Delivered complete with dust class M filter cartridge.



## Cougair Mobile Fan

This mobile service fan is delivered as a complete unit with complete accessories, ready for use. Highly suitable for the on-site removal of fume, welding smoke or dust.

The Cougair Mobile Fan is mounted on a trolley with wheels & handle. The kit includes 5m cable with plug, switch, motor protection, 5m suction hose with quick coupling, hood with magnet and 5m outlet hose with quick coupling

### Key features:

- Mobile service fan with complete accessories kit.
- Protection grid on inlet and outlet according to EN 13857.
- Capacity: 1,000 m<sup>3</sup>/h at 1,000Pa.
- Is delivered with storage bracket for hoses and cable.
- Equipped with telescopic transport handle.
- Equipped with carry handle.
- Delivered with air-flow optimized hood with magnet.



## Cougair 300 Hi-Vac Unit

High vacuum unit type Cougair 300 is excellent for cleaning and extraction of dust and chips from e.g. electric or compressed-air tools. Is equipped with manual roto-cleaning.

### Key features:

- Highly mobile and compact design.
- For mobile welding/grinding tasks of shorter duration (e.g. repair work).
- Light-weight design.
- Easy filter replacement.
- Forced motor cooling by external air.
- Delivered completely with cable and plug.
- Delivered complete with dust class M filter cartridge.



### Buying information

Part nr.	Item
EXTR1017	Cougair 200 portable Hi-Vac unit
EXTR2008	Filter for Cougair 200
EXTR1018	Cougair 210 Mobile Fan
EXTR1019	Cougair 300 Hi-Vac Unit



### Cougarm A-series

Flexible extraction arm for applications such as the extraction of welding smoke, soldering smoke, dust, aerosols and fumes. Direct hose connection to ductwork, available in lengths 1-9 m.

Suction arm hood ensures high efficiency, and the outer bar system means minimal maintenance. Aluminium coating to the inside of the hose provides extended life with e.g. welding.

**Key features:**

- Easy-moving suction arm with wall mountings.
- Outer support structure provides better flow and less wear.
- Air-flow optimized hood.
- Direct hose connection to channel.
- Arm length 1-1.5m is available with combined table/wall mountings.
- Arm length 2-9m is delivered with wall mountings.



**Ex** ATEX Variant Available

### Cougarm B-series

Very flexible extraction arm for applications such as welding smoke, soldering smoke, dust, aerosols and fumes. Can rotate freely 360°, available in lengths 2-9 meters.

Suction arm hood ensures high efficiency, and the outer bar system means minimal maintenance. Aluminium coating to the inside of the hose provides extended life with e.g. welding.

**Key features:**

- Easy-moving suction arm with large movement pattern.
- Can rotate freely 360°.
- Air-flow optimized hood.
- Outer bar support system provides better flow and less wear.
- Mountings for wall with maintenance free swivel.
- Arm length: 2-4 m, connected with nipple to channel.
- Arm length: 5-9 m, connected with hose to channel.
- Fan can be mounted directly on suction arm.



**Ex** ATEX Variant Available

### Cougarm C-series

Flexible extraction arm in pipe version for the extraction of welding smoke, soldering smoke, dust, aerosols and fumes. With powder coated steel pipes and available in lengths 2-9 meters. Rotation 360°.

Suction arm with powder coated steel pipes for pressure drop reduction and energy efficiency. Outer bar system and efficient hood gives optimal air flow with minimal wear. Aluminium coating to inside of hose provides optimal life with e.g. welding.

**Key features:**

- Fixed, powder coated steel pipes for optimal flow and design.
- Easy-moving suction arm with large movement pattern.
- Can rotate freely 360°.
- Outer bar support system provides better flow and less wear.
- Air-flow optimized hood.
- Mountings for wall with maintenance free swivel.
- Arm length: 2-4 m, connected with nipple to channel.
- Arm length: 5-9 m, connected with hose to channel.



**Buying information**

Part nr.	Item
EXTR2010	Cougarm A-series Extraction Arms
EXTR2011	Cougarm B-series Extraction Arms
EXTR2012	Cougarm C-series Extraction Arms



### Cougarm Telescopic Arm Series

Extendable, durable extraction arm for application in connection with welding smoke, soldering smoke, dust, aerosols and fumes. Arm is available in lengths 2-7 meters.

Telescopic arm for narrow work areas or low-ceilinged rooms. Suction arm with internal support bar system, balanced with gas springs and spring balancer. Aluminium coating in hose provides optimized life with welding.

**Key features:**

- Suction arm for small welding cabinets and low-ceilinged facilities.
- Robust construction with long lifetime.
- Can rotate freely 360°.
- Can be used horizontal or vertical along wall.
- Air-flow optimized hood.
- Mountings for wall with maintenance free swivel.
- Length: 2m, connected with nipple to channel.
- Length: 3-7m, connected with hose to channel.



### Cougarm Pivotal Hood Series

Strong pivotal hood for the extraction of grinding dust, welding smoke as well as fumes from larger surfaces. Direct hose connection to channel, available in lengths 3-6 m.

Pivotal hood consists of a swing arm with metal pipe and hose as well as hood. Is constructed to carry heavier hoods/suction panels. Hood weight capacity up to 35 kg (in rotating joint). Delivered with mountings for wall.

**Key features:**

- Hood weight capacity for straight suspended suction surfaces: 35kg.
- Hood weight for tiltable suspended suction surfaces: 10 kg.
- Standard hood: 300x1500mm with edge extraction.
- Hood is made in aluminium with protection edges.
- Hood is self-supporting and be tilted and rotated 360°.
- Is also available with extraction panel.
- Alternative hoods with edge extraction in steel or aluminium available.



### Cougarm Swing arm Series

Swing arm for suspension of hose, nozzles and handheld tools. Large work area, so you always have the tool at your disposal. Lengths from 2-6 m. Can swing freely 270°.

Delivered with mountings for wall as well as C-rail and rotation joints for hose strips. Large selection of suitable hoses and nozzles. Spring balancers are used to match weight of hose and nozzle.

**Key features:**

- Covers a large work area.
- Wide range of many applications.
- Large carrying capacity (25 kg).
- Wide program of accessories.
- Rotation joint is used to achieve flexible suspension.
- Spring balancers with locking device ensures required extraction length.



### Floor pillars for Cougarm Extraction Arms

This floor pillar system is suitable for suspension of 1 or 2 suction arms. 2 heights (2.5 and 3m) and 2 dimensions available, depending on the load. Can be placed freely in a room or along the wall.

The floor pillars are delivered in powder coated steel. At suction arm lengths up to 4m, pillar thickness 100x100mm are used. At suction arm lengths from 5-9m, pillar thickness 150x150mm is used.

**Key features:**

- Solid design, with robust specifications.
- Easy mounting in concrete floors.
- Pillars are specifically designed for suspension of arms.
- Floor pillars have many applications.
- Delivered ready for installation.

**Buying information**

Part nr.	Item
EXTR2013	Cougarm Telescopic Arm Series
EXTR2014	Cougarm Pivotal Hood Series
EXTR2015	Cougarm Swing Arm Series
EXTR2016	Floor Pillars for Cougarm Extraction Arms





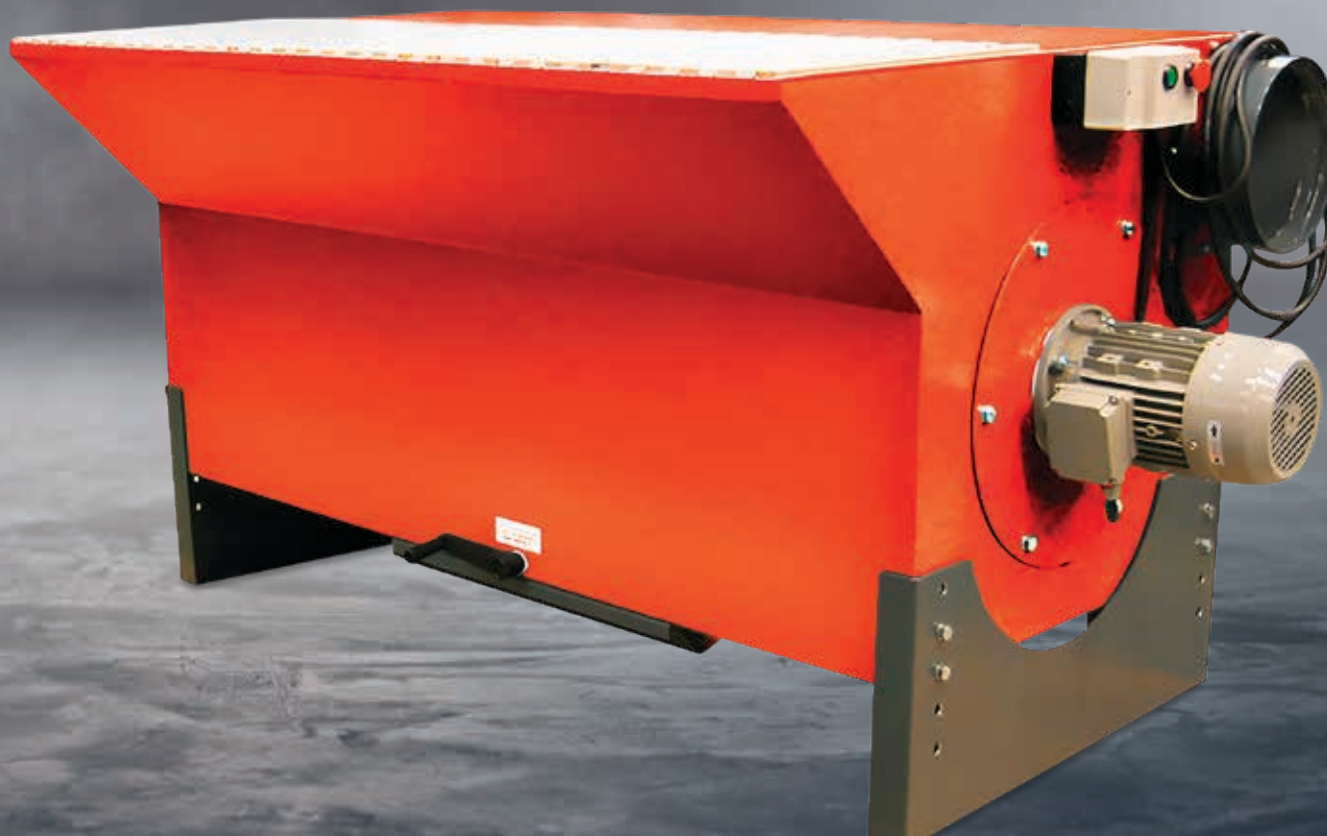
## Cougair Filter Solutions

Our range of filter products are very extensive. The filter cassettes have been selected in collaboration with the market's best filter experts.

The filters are approved according to internationally recognized tests. Our range includes all common types with various filter materials for various applications. Other criteria include cleaning method, washability, size and test / classification.

### Key features:

- Large selection of disposable and cleanable filters.
- Filters with low filtration ability.
- Filters with very high filtration ability.
- Filters for dry air.
- Filters for humid air.
- Easy-to-install design.
- Common filters are available for fast delivery.
- Excellent documentation and certification.



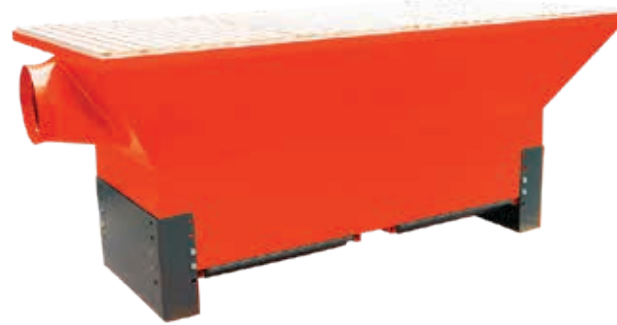
## Cougair Downdraft Table Model A

Extraction table with extraction via tabletop. Suitable for gluing, grinding, polishing, welding or manual cutting applications. Lengths: 1000 - 2500mm. Widths: 1000 or 1250mm.

Process air is led in through table ribs and out through outlet at table end. The table is easily height-adjusted by leg brackets. Dust is collected in dust container in table base. Staff can move freely on 3 table sides.

### Key features:

- Ergonomic table that can be adjusted to the height of the user.
- Access from 3 sides.
- Easy installation and connection.
- The table is delivered fully assembled, and only connection to piping, filter unit and fan is required.



## Cougair Downdraft Table Model B

Extraction table with extraction via tabletop. Suitable for gluing, grinding, polishing, welding or manual cutting applications.

Extraction table with built-in air distribution chamber and height-adjustable legs. Tabletop is made with wooden slats as standard. Steel, stainless steel or plastic slats are available as options.

### Key features:

- Height-adjustable extraction table from 680-980mm.
- The table is available in two depths and five table lengths.
- Extraction arm can be mounted directly on the table.
- Is available with rear extraction wall.
- Is available with rear wall, side walls and top cover.
- With noise-damped rear and side walls, the noise level is reduced.



## Cougair Downdraft Table Model C

Extraction table with electric height-adjustment. Light industrial design with the ergonomics in focus. The table has been designed for standing and sitting work with good leg-room.

The electric height-adjustment makes it possible to find the ideal working height. For use in relation to dust, smoke and fumes.

### Key features:

- Electric height-adjustment from 638-938mm.
- Table lengths 1000, 1500 and 2000mm.
- Designed with an extra deep working area of 950mm (suction area 824mm).
- The wide base construction of the table provides great stability.
- Weight capacity/workpiece weight up to 200kg per length meter (evenly spread).



## Cougair Downdraft Table Model D

Height-adjustable extraction table with fan and extraction by tabletop. Especially suitable for use as glue table, grinding table, polishing table, welding table or manual cutting table.

Universal extraction table with built-in filter cartridge and manual Root-cleaning. Tabletop is made with wooden slats as standard. Steel, stainless steel or plastic slats are available as options.

### Key features:

- Height-adjustable extraction table from 680-980mm.
- Supplied as standard with motor, filter and root-cleaning.
- Filter table is delivered in two depths: 1000 or 1250mm.
- Table lengths: 1000, 1500, 2000, 2500 and 3000mm.
- Available with rear extraction wall.
- Available with rear and side wall set, with hinged top.
- With noise-damped top and side walls the noise level is reduced.





### Cougair Spray Extraction Table

Durable inexpensive spray extraction table for work areas where spray paint and glue are used. Includes filter membrane in rear wall, and extraction via the tabletop.

**Key features:**

- Durable powder coated construction.
- Perforated enameled steel table plate with out extraction.
- Extraction in backwall and at the floor.
- Suitable for lighter and heavier gases.
- Easy exchangeable filter.
- Easy cleaning.



### Cougair Light Downdraft Table

Durable inexpensive extraction table, especially suitable for glueing, glass-fiber production and manual painting. Designed for heavier gases.

This extraction table is suitable for use for gluing or the cleaning of instruments and the like, where solvents are used that are heavier than the air. Downdraft extraction via tabletop.



**Key features:**

- Durable powder coated construction.
- Perforated powder coated steel table plate.
- Table with distribution chamber.
- Suitable for heavier gases.
- Downdraft extraction in tabletop and at the floor.

### Cougair Mixing Table

Durable inexpensive mixing table, especially suitable for the mixing of printing ink, paints and glue. Suitable for lighter and heavier gases.

This mixing table is suitable for use for gluing, painting, mixing & chemistry. Extraction by top, tabletop and floor suction. Well-functioning slot extraction above is intended for gases lighter than air.

**Key features:**

- Durable power coated construction.
- Perforated power coated steel table plate.
- Table with distribution chamber.
- Suitable for lighter and heavier gases.
- Extraction in the top, in the tabletop and at floor level.
- No maintenance.



### Cougair Manual Cutting Table

Manual durable cutting table suitable for handheld plasma cutting. The cutting table is designed with water baths and air distribution chamber.

This plasma cutting table features a steel cutting grid constructed from 30x6mm steel bar. The cutting table is made with water baths, where the dust is captured during cutting process.

**Key features:**

- Manual cutting table.
- Suitable for handheld plasma cutting.
- Easily detachable steel grid system.
- Earth connection on table.
- Water baths, where dust and smoke are captured in the water.
- Max. table weight load: 25mm mild steel plate.



#### Buying information

Part nr.	Item
EXTR4011	Cougair Downdraft Table Model A
EXTR4012	Cougair Downdraft Table Model B
EXTR4013	Cougair Downdraft Table Model C
EXTR4014	Cougair Downdraft Table Model D
EXTR4018	Cougair Spray Extraction Table
EXTR4016	Cougair Light Downdraft Table
EXTR4017	Cougair Mixing Table
EXTR4015	Cougair Manual Cutting Table

## Cougair Extraction Cabinet

This extraction cabinet is designed to be placed on an even work table. Suitable for painting, gluing, polishing, welding, where the fumes, gases, smoke and dust must be removed.

This cabinet must be connected to an extraction unit. It is available in 2 versions - model A with straight bottom, and model B with curved bottom. It is also available with slant cut side plates, which provide maximum air flow.

### Key features:

- Large extraction surface.
- Large extraction capacity at a low air volume.
- Low differential pressure.
- Easy installation.
- Low weight, easy handling.
- Easy maintenance.
- Is available with straight or slant cut sides.

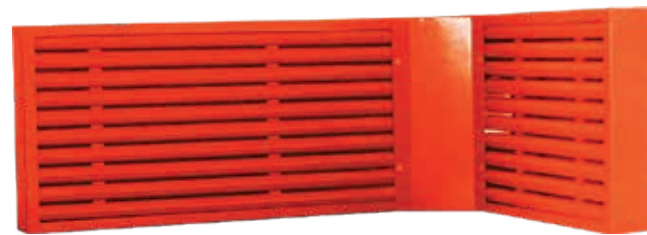


## Cougair Panel Extraction

### Type A

This panel extraction solution is excellent as angle grinding wall with grinding with angle grinder or eccentric sander to remove metal dust.

The system is constructed in steel with extraction slots. Standard constructed with back and side walls, connected in an angle, which makes the extraction especially efficient.



### Key features:

- Angle wall construction is optimized for grinding.
- Delivered in 3 parts that are easily assembled and installed.
- Can be wall-hung.
- High capture velocity.
- Air is distributed over the complete extraction surface.

## Cougair Panel Extraction

### Type B

This extraction panel system is suitable for the process air extraction from grinding, milling, powder mixing or other stationary dust-generating processes.

This system is especially suitable as a grinding wall for angle grinder and eccentric sander processes. The panel is designed so that the air is distributed over the extraction surface. The extraction surface is made with steel strips.



### Key features:

- Consists of steel housing and pressed steel strips.
- Can be wall-hung.
- Delivered ready for installation.
- Strips can be removed for easy cleaning.
- Even air flow distribution.
- High capture velocity.

## Cougair Filter Panel System

This filter panel system functions as an efficient filter wall for the extraction of dust and fume, where filter class G4 can be used. Equipped with disposable filter. Designed to be placed on a worktable.

The wall is equipped with Z filter in the rear wall. This filter is suitable for removing paint and dust particles. This model can be built together to larger units. Extraction by top connection.

### Key features:

- Ergonomic table that can be adjusted to the height of the user.
- Access from 3 sides.
- Easy mounting and connection.
- The table is delivered fully assembled.
- Must only be connected to piping, filter unit and fan.
- Following filter unit types can be used: CJF, ACF and FRS.



## Cougair Extraction Wall System

Extraction wall UP is especially suitable for work with paint, cleaning, polishing or grinding. An efficient filter extraction wall for many applications.

Suitable for use anywhere where the extraction of volatile fumes and dust is required. Delivered incl. Andrae-filter (standard), paintstop-filter or steel lamellas. Available in heights 1 or 2m, length 1-3m. Option for additional cassette in front.



### Key features:

- Flexible powder coated spray/paint/extraction wall.
- Intended for fumes and dust extraction.
- Can be delivered with various efficient filters.
- Available with sides and top.
- Easy filter replacement and cleaning.



### Cougair Welding Table

This welding table has many applications. Especially suitable as institution welding table, soldering table or brazing table for education purposes.

The welding table is made of bolted profiles for quick and easy assembly. Delivered as a kit at a low price. Very flexible, with many applications. Can e.g. be delivered with welding fixture.

**Key features:**

- Durable powder coated construction.
- 10mm Steel plate as standard tabletop.
- Assembled by bolted profiles.
- Wide range of additional equipment.
- Option for grid or refractory bricks on the table surface.
- Available in 3 sizes.



**Key features:**

- Highly efficient design.
- Supplied with system for bolting on lamella curtains.
- Is equipped with a deflector plate for air distribution.
- Equipped with 4 suspension points.
- Several modules can be bolted together.
- Suspension lamellas in 3 colours.

### Cougair Curtain System

Lamellas in either 2 or 3mm thickness for fastening on to Cougair Hood Type B or for covering gate openings.

By fastening lamellas on to Cougair Hood Type B, a curtain is formed which provides effective extraction and screening of processes, where pin-point extraction is not possible. With fixed suspension in 1"-pipe the lamellas can form a curtain in front of gate openings to protect against drag or cold among other things.



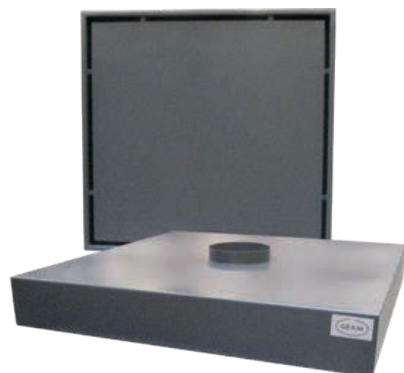
**Key features:**

- Durable lamellas in 3 colours.
- Available in wall thickness 2mm or 3mm.
- Lamellas tested according to DIN norm. are delivered according to measurement, incl. lamella overlap.
- Easy mounting by hood mounting system.
- Using 1"-pipe components, the lamellas can easily be mounted in front of gate openings.

### Cougair Hood Type A

High-efficiency hood equipped with edge extraction. Edge extraction provides high efficiency and provides an air curtain the whole way along the edge. Suitable for the extraction of fumes.

The hood is suspended beneath the ceiling or down from the ceiling and manufactured as standard in powder coated steel. Available as standard in 5 sizes: 600x600mm, 800x800mm, 1000x1000mm, 1250x1250mm and 1500x1500mm



**Key features:**

- Especially efficient design.
- The hood is equipped with edge extraction.
- Mounted beneath or in the ceiling.
- Fittings are available.
- Made in powder coated steel.
- Special measurements according to request.

### Cougair Hood Type B

Flexible hood with the option for installing lamella curtains and bolting together. As extraction and screening at processes with fumes and lighter dust types.

Highly efficient hood with deflector plate for optimal air distribution. Often used in connection with robots, mixing vessels, output areas on conveyor belts and similar. The modules can easily be combined to create larger extraction surfaces.

### Buying information

Part nr.	Item
EXTR4019	Cougair Extraction Cabinet
EXTR4020	Cougair Panel Extraction Type A
EXTR4021	Cougair Panel Extraction Type B
EXTR4022	Cougair Filter Panel System
EXTR4023	Cougair Extraction Wall System
EXTR4024	Cougair Welding Table
EXTR4025	Cougair Educational Cutting Table
EXTR4026	Cougair Hood Type A
EXTR4027	Cougair Hood Type B
EXTR4028	Cougair Curtain System

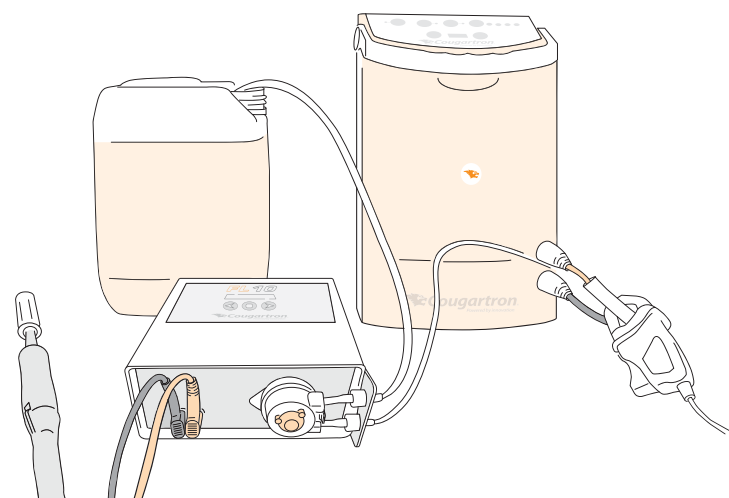
## Constantly Pioneering: Crafting Tomorrow's Excellence, Today.

### How to Buy:

Cougartron takes pride in its expansive and ever-growing presence across the international landscape, with a reach that extends to 120 countries. At the heart of our commitment to customers like you is a well-established network comprising over 200 dedicated, highly trained, and approved dealers and representatives.

Our global network is the backbone of our operations, designed to ensure that you have seamless access to our top-quality products and unwavering support precisely when you need it. Whether you are looking for our cutting-edge solutions or require assistance with technical queries, our extensive dealer and representative network is your direct connection to the Cougartron experience.

We've meticulously cultivated these partnerships to provide you with a localized touch and global reach. No matter where you are, you can count on Cougartron to be there, ready to meet your needs and exceed your expectations. We believe that *your success is our success*, and our international network is a testament to this commitment.



We'd love to hear from **you!**

#### DENMARK HEADQUARTERS

Email: [sales.nordics@cougartron.com](mailto:sales.nordics@cougartron.com)

Phone: +45 4346 2010

#### SWEDEN

Email: [sales.nordics@cougartron.com](mailto:sales.nordics@cougartron.com)

Phone: +46 8 5504 8999

#### GERMANY

Email: [sales@cougartron.com](mailto:sales@cougartron.com)

Phone: +49 3222 1090 857

#### UNITED KINGDOM

Email: [sales@cougartron.com](mailto:sales@cougartron.com)

Phone: +44 121 368 0097

#### UNITED STATES

Email: [sales.us@cougartron.com](mailto:sales.us@cougartron.com)

Phone: +1 404 591 8920

#### CANADA

Email: [sales.us@cougartron.com](mailto:sales.us@cougartron.com)

Phone: +1 404 591 8920

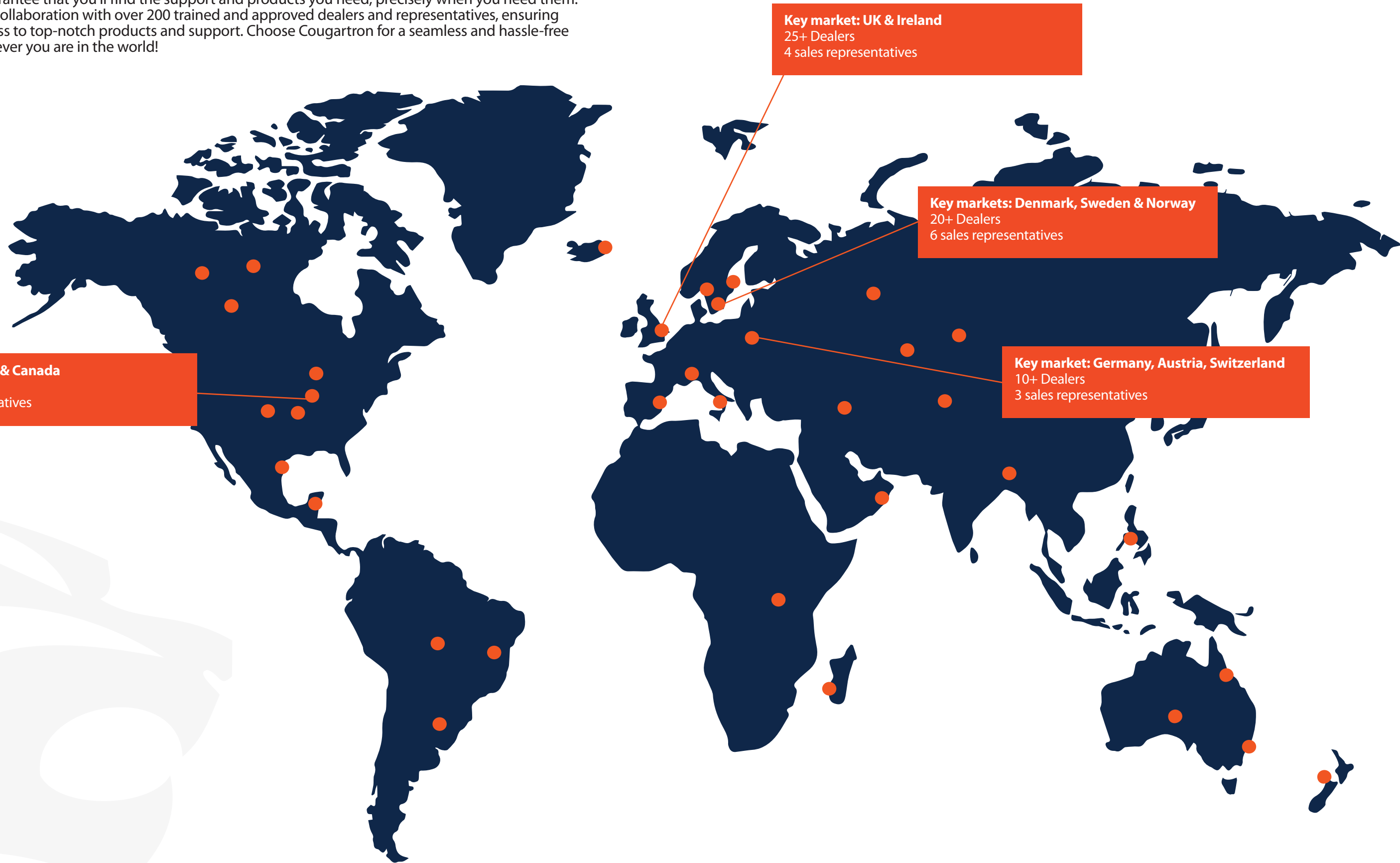
#### SUPPORT & REPAIRS

Email: [support@cougartron.com](mailto:support@cougartron.com)

# CONTACT



Discover the power of Cougartron's global reach! With our extensive sales network spanning over 120 countries, we guarantee that you'll find the support and products you need, precisely when you need them. Benefit from our collaboration with over 200 trained and approved dealers and representatives, ensuring unparalleled access to top-notch products and support. Choose Cougartron for a seamless and hassle-free experience, wherever you are in the world!





**Denmark (HQ)**  
**Cougartron ApS**

Brydehusvej 23  
2750 Ballerup  
Denmark  
Tel. +45 4346 2010  
[sales.nordics@cougartron.com](mailto:sales.nordics@cougartron.com)

**United Kingdom**  
**Cougartron ApS**

A2 Parkway West, Cranford Lane  
Hounslow, Middlesex TW5 9QA  
United Kingdom  
Tel. +44 21 368 0097  
[sales@cougartron.com](mailto:sales@cougartron.com)

**USA**  
**Cougartron Inc.**

2507 E 21st Street  
Des Moines, IA 50317  
United States  
Tel. +1 404 591 8920  
[sales.us@cougartron.com](mailto:sales.us@cougartron.com)